

*We are innovators who make
purpose-built technical apparel and gear
for life's most demanding missions.*

5.11  [®]

INDEX

ABOUT US	04
APPAREL	06
LOADBEARING GEAR	30
K-9 GEAR	50
FOOTWEAR	54
PHYSICAL TRAINING READY	60
SIZING	68

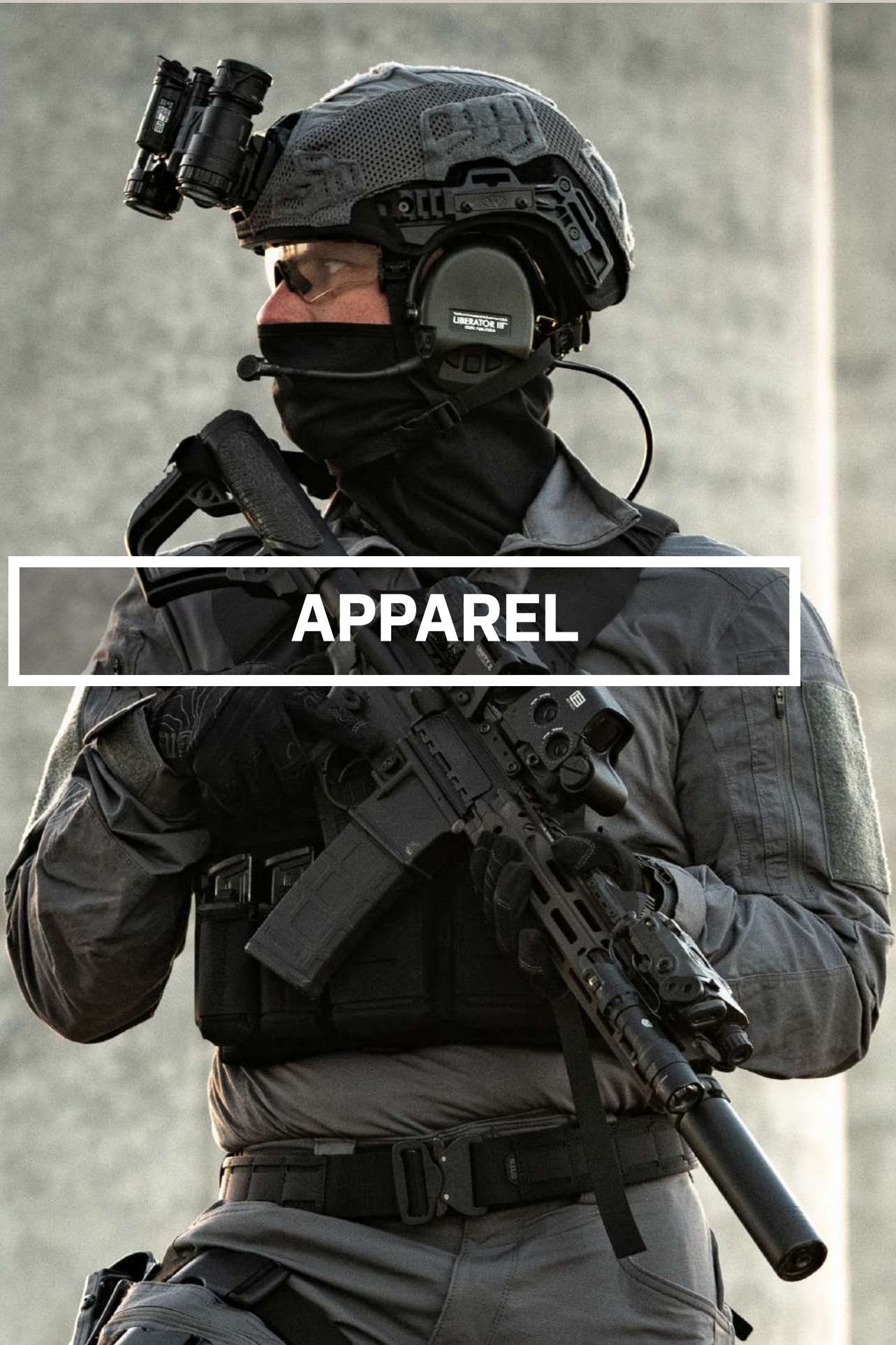
OUR TIMELINE

- 1979**
Legendary adventurer and pioneering rock climber Royal Robbins creates the first "5.11 Pant", redefining functional apparel. The name 5.11 comes from the most technical climbing pitch at the time
- 1992**
FBI National Academy adopts the Original 5.11 Pant as their primary spec pant, quickly spreading 5.11's popularity to the law enforcement agencies across the nation
- 2003**
5.11 Tactical founded, starting with a collection of six products that has since grown to over 67,000 SKUs
- 2003**
5.11 EMEA founded with HQ in Malmö, Sweden
- 2005**
5.11 HQ established in Modesto, CA. Creation of our first line of footwear and bags
- 2007**
RUSH Backpacks launch, spawning a new category of mission and adventure ready gear
- 2009**
5.11 launches its first full line of uniforms, becoming the preferred choice of U.S. law enforcement agencies
- 2011**
5.11 EMEA launches its Certified Store Program
- 2012**
The 5.11 Stryke Pant w/Flex-Tac redefines the tactical cargo pant
- 2012**
5.11 adopts the tagline "Always Be Ready". Establishes new Development Center in Irvine, CA.
- 2017**
5.11 establishes new 400,000 sq. ft. Operations Center in Manteca, CA
- 2018**
5.11 EMEA opens the first European retail store in Hamburg, Germany
- 2021**
5.11 EMEA establishes a product team developing products for EMEA regional needs
- 2023**
5.11 celebrates its 20-year anniversary and launches the V.XI line

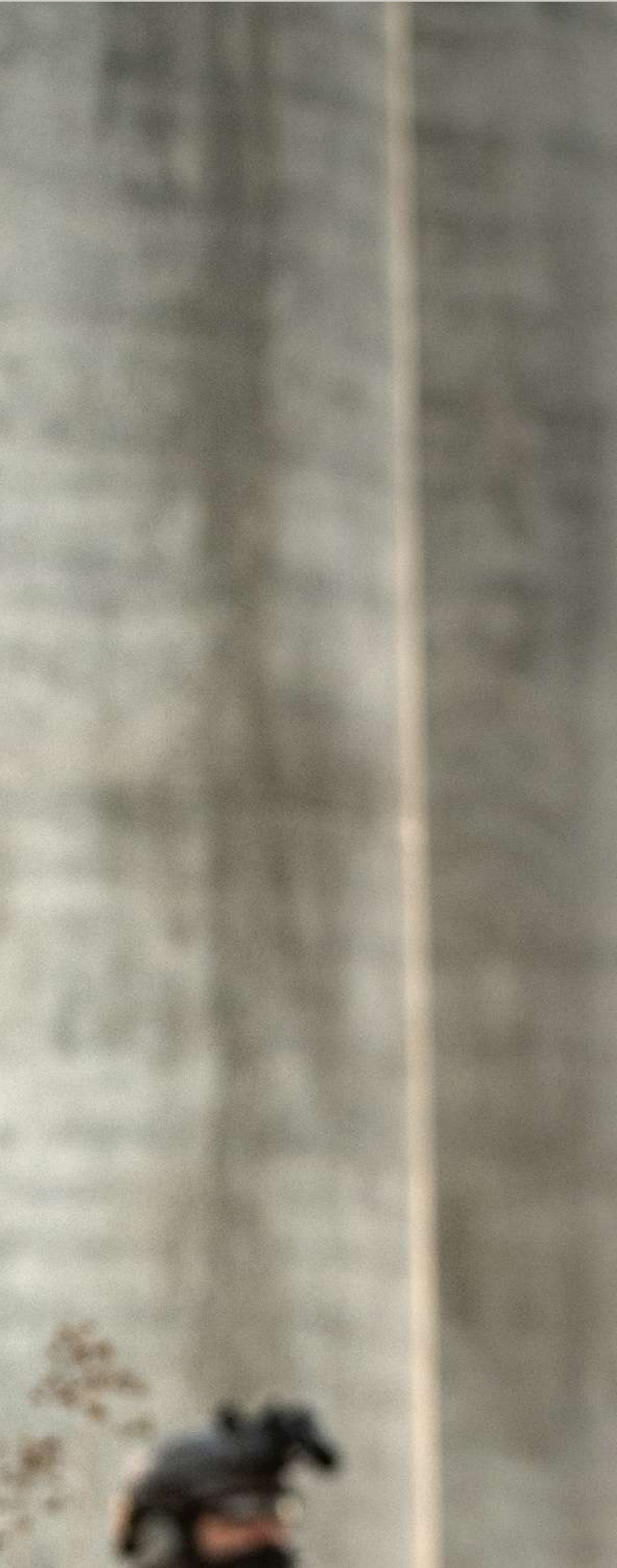
WE ARE ONLY JUST GETTING STARTED







APPAREL



In 2023 we are particularly excited to launch our V.XI Collection of purpose-built gear for today's professionals. The first elite products in the line are our XTU Rapid Shirt and XTU Pant [page 8-9]. Developed in partnership with top-tier teams from around the world, the XTU uniforms provide operators with the most functional mission-ready apparel to date.

For duty or adventure missions that require weather-ready apparel, take a look at our Hot Weather uniform for blistering hot temperatures [page 16-17], our Bastion Set with Primaloft® insulation for cold climates [page 18], or the EN 343 certified and fully seam-sealed Force Rain Pant and Rainshell Jacket [page 19].



NEW

XTU STRAIGHT FIT PANT

CORDURA Ortholite®

- + No melt No drip stretch fabric
- + Comfort waistband with Logo snap and hook and loop closure at center front waistband
- + Self-fabric loops at front belt loops and center back belt loop for tool attachment
- + Ortholite™ foam support at back waistband
- + Two-way zipper at front fly
- + Large cargo pockets with volume folds and zipper closure
- + N6 nylon Mag Pocket inside cargo pocket
- + Back pockets with zipper closure
- + Gusseted construction
- + Ventilation opening at inside leg
- + Soft kneepad inserted in the inside of the pant
- + 5.11® patented kneepad system at outside of the knee
- + Shoelace hook attached at leg opening
- + Adjustable hem with internal shock cord system
- + 58% cotton/ 39% nylon Cordura/ 3% elastane ripstop, 193g, Teflon™ finish

74506 XTU STRAIGHT FIT PANT | BLACK (019), STORM (092), RANGER GREEN (186), DARK NAVY (724) | 28-44 (EVEN SIZES) (30-36) | **€179**

BLACK 019

STORM 092

RANGER GREEN 186

DARK NAVY 724





NEW

XTU RAPID L/S SHIRT

- + No melt No drip stretch fabric
- + ¼ zip center front closure
- + Dual sleeve pockets with pen holder and loop patches at biceps
- + Adjustable cuffs
- + Gusseted construction with knit fabric for breathability
- + Reinforced elbows
- + Flat lock seams for comfort
- + Bar tacking at key stress points
- + Woven: 58% cotton/ 39% nylon/ 3% elastane ripstop, 193g, Teflon™ | Knit: 60% cotton/ 40% nylon jersey, 170g

72508 XTU RAPID L/S SHIRT | BLACK (019), STORM (092), RANGER GREEN (186), DARK NAVY (724) | XS-4XL | €159

BLACK 019

STORM 092

RANGER GREEN 186

DARK NAVY 724

NEW

XTU COMBAT KNEECAP

- + XTU pant external hardshell kneecap
- + Provides protection while kneeling on hard / tough surfaces
- + Affixes with 4 attachment points

56675 XTU COMBAT KNEECAP | BLACK (019), STORM (092), RANGER GREEN (186) | 1 SZ | €12

BLACK 019

STORM 092

RANGER GREEN 186





NEW

FLEX-TAC® TDU® RIPSTOP PANT

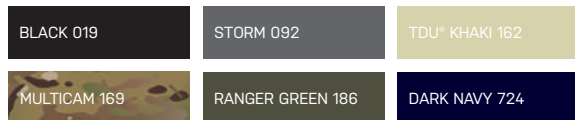
- + Teflon™ finish for soil and stain resistance
- + Tunnel waistband
- + Front zipper fly opening with logo snap closure, and secondary inner fly button
- + Reinforced belt loops
- + Hand pockets with internal reinforcement for knife clip and right side has hidden coin pocket
- + Back body pockets with pocket flap and hook/ loop closure
- + Shaped gusset
- + Double layer seat
- + Large pleated cargo pockets with back side bellow
- + Inside of cargo pockets have internal pockets compatible with TacTec System™
- + Large pleated cargo pockets with back side bellow
- + Double knee with internal knee pad pocket insert
- + Leg openings have removable blousing straps

74098 FLEX-TAC TDU RIPSTOP PANT | BLACK (019), STORM (092), TDU® KHAKI (162), RANGER GREEN (186), DARK NAVY (724) | 28, 30-44 (EVEN SIZES) (30-34) | **€79**

74098MC FLEX-TAC TDU RIPSTOP PANT | MULTICAM (169) | 28, 30, 31, 32-44 (EVEN SIZES) (30-34) | **€149**

64393 WM FLTC TDU RP PANT | BLACK (019), STORM (092), TDU® KHAKI (162), RANGER GREEN (186), DARK NAVY (724) | 0-20 (EVEN SIZES) (R, L) | **€85**

64393MC WM FLTC TDU RP PANT | MULTICAM (169) | 0-20 (EVEN SIZES) (R, L) | **€149**



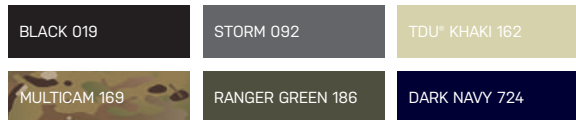
NEW

FLEX-TAC® TDU® RAPID L/S

- + Pull over with ¼ zip front
- + Ripstop upper body, sleeves, and collar
- + Plain weave lower front/ back body
- + Mesh side body/ underarm panels
- + Flat lock seams for comfort
- + Low profile sleeve pockets with flap and hook/ loop closure
- + Loop patch platform on sleeve pockets
- + Reinforced articulated elbows
- + Lower sleeve pen pocket

72565 FLEX-TAC TDU RAPID LS | BLACK (019), STORM (092), TDU® KHAKI (162), RANGER GREEN (186), DARK NAVY (724) | XS-3XL | **€79**

72565MC FLEX-TAC TDU RAPID LS | MULTICAM (169) | XS-3XL | **€139**





NEW

FLEX-TAC® TDU® RAPID S/S SHIRT

- + Teflon™ finish for soil and stain resistance
- + Fold down collar
- + Inner center back neck locker loop
- + Double layer back yoke
- + Concealed 30L 4-hole Melamine buttons at center front placket
- + Left/ right chest ReadyPocket™ with hook/ loop closure
- + Left/ right chest patch pocket with side bellow, pocket flaps, and hook/ loop closure
- + Straight hem
- + Epaulette and badge tab supplied in a kit

71095 FLEX-TAC TDU RP SS SHIRT | BLACK (019), TDU® KHAKI (162), RANGER GREEN (186), DARK NAVY (724) | S-2XL | €75

61041 WM FLTC TDU RP SS SHIRT | BLACK (019), TDU® KHAKI (162), RANGER GREEN (186), DARK NAVY (724) | S-XL | €75

BLACK 019	TDU® KHAKI 162	RANGER GREEN 186
DARK NAVY 724		



NEW

FLEX-TAC® TDU® RAPID L/S SHIRT

- + Teflon™ finish for soil and stain resistance
- + Fold down collar
- + Inner center back neck locker loop
- + Double layer back yoke
- + Concealed 30L 4-hole Melamine buttons at center front placket
- + Left/ right chest ReadyPocket™ with hook/ loop closure
- + Left/ right chest patch pocket with side bellow, pocket flaps, and hook/ loop closure
- + Pen pocket at wearer's upper left sleeve
- + Articulated sleeve
- + Elbow pad pocket
- + Adjustable 30L Melamine 4-hole button sleeve cuff/ placket
- + Straight hem
- + Epaulette and badge tab supplied in a kit

72250 FLEX-TAC TDU RP LS SHIRT | BLACK (019), STORM (092), TDU® KHAKI (162), RANGER GREEN (186), DARK NAVY (724) | S-2XL | €79

72250MC FLEX-TAC TDU RP LS SHIRT | MULTICAM (169) | S-2XL | €179

62081 WM FLTC TDU RP LS SHIRT | BLACK (019), STORM (092), TDU® KHAKI (162), RANGER GREEN (186), DARK NAVY (724) | S-XL | €79

62081 MC WM FLTC TDU RP LS SHIRT | MULTICAM (169) | S-XL | €179

BLACK 019	STORM 092	TDU® KHAKI 162
MULTICAM 169	RANGER GREEN 186	DARK NAVY 724



QUANTUM TEMS PANT

The Quantum TEMS Pant is based on our popular Quantum TDU® pant, and constructed from the same functional FlexLite™ ripstop fabric for maximum flexibility and durability. The comfort waistband, regular fit and stretch gusset construction provide ease of movement. We have adjusted the pockets, upgraded the material in the knee area to a highly durable 500D Cordura and added hook-and-loop adjusters to allow you to cinch down the knee pads for a perfect ergonomic fit.

- + Main: 71% polyester / 29% cotton FlexLite™ ripstop, 159g Teflon™
- + Cordura reinforced knee
- + Kneepad ready
- + D-ring on belt loop
- + Double Belt loops

74106EU QUANTUM TEMS PANT | BLACK (019), PSNI GREEN (858) | 30-36, 38, 40, 42, 44, 46 (30-36) | €79

64044EU WMN QUANTUM TEMS PANT | BLACK (019), PSNI GREEN (858) | 0-16 (EVEN SIZES) (R, L) | €79

BLACK 019

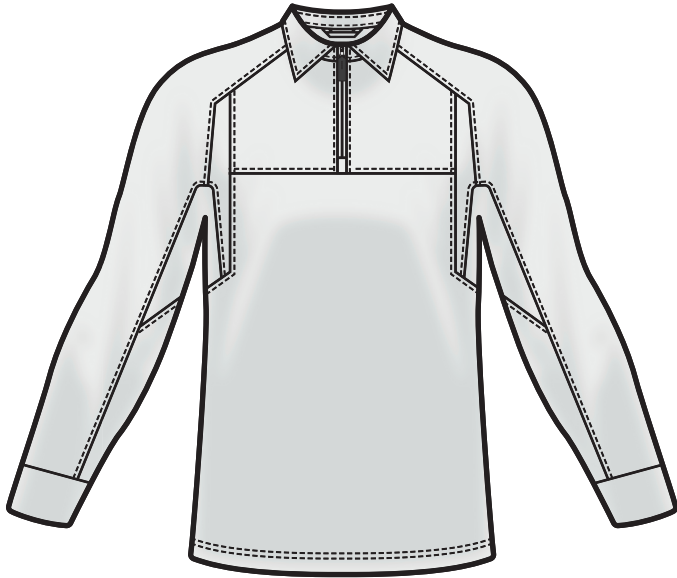
PSNI GREEN 858





WARNING!
HOLD HAND RAILS IN CENTRE
RISK OF PINCH POINT WHEN CLOSING DOORS

PULL CATCH
TO OPEN



NEW

PDU® COLD RAPID L/S

- + 8K/ 5K waterproof breathable upper front body, shoulder, and sleeves
- + Grid fleece lower body and under sleeves
- + Center front zip-up collar with internal chin guard
- + On seam chest zipper pockets
- + Side body/ underarm gussets

42196 PDU CLD RAPID LS | BLACK (019), MIDNIGHT NAVY (750), UNIFORM WHITE (992) | XS-3XL | €119

BLACK 019

MIDNIGHT NAVY 750

UNIFORM WHITE 992

NEW

MOCK NECK L/S TOP

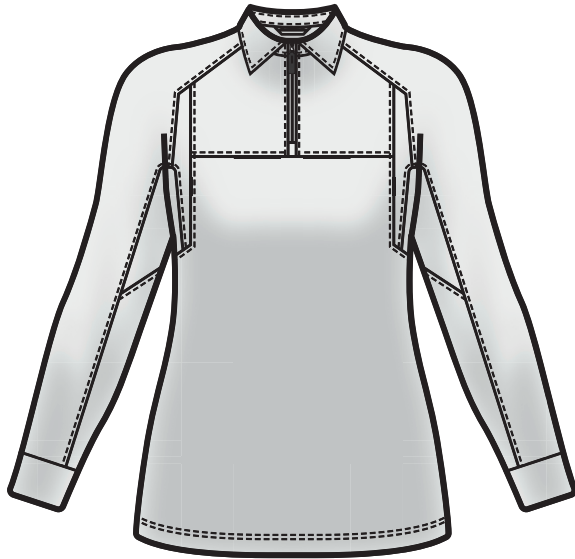
- + Pull over mock-neck long sleeve
- + Flat lock seams for comfort

42194 MOCK NECK LS TOP | BLACK (019), MIDNIGHT NAVY (750), UNIFORM WHITE (992) | XS-3XL | €55

BLACK 019

MIDNIGHT NAVY 750

UNIFORM WHITE 992



NEW

WOMEN'S PDU® COLD RAPID L/S

- + 8K/ 5K waterproof breathable upper front body, shoulder and sleeves
- + Grid fleece lower body and under sleeves
- + Center front zip-up collar with internal chin guard
- + On seam chest zipper pockets
- + Side body/ underarm gussets
- + Specific fabric placement for warmth, enhanced movement, comfort & durability
- + Easy access large chest pocket with zipper closure
- + Gusseted construction with breathable knit fabric

32165 WM PDU CLD RAPID LS | BLACK (019), MIDNIGHT NAVY (750), UNIFORM WHITE (992) | XS-XL | €119

BLACK 019

MIDNIGHT NAVY 750

UNIFORM WHITE 992



NEW

WOMEN'S MOCK NECK L/S TOP

- + Pull over mock-neck long sleeve
- + Flat lock seams for comfort

32164 WN MOCK NECK LS TOP | BLACK (019), MIDNIGHT NAVY (750), UNIFORM WHITE (992) | XS-XL | €55

BLACK 019

MIDNIGHT NAVY 750

UNIFORM WHITE 992



HOT WEATHER COMBAT SHIRT

Light weight, breathability and maximum comfort in hot environments were the main focus points when designing and developing the 5.11® Hot Weather Uniform system.

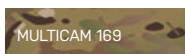
Fit, sizing-system and material choices have been made relying entirely on military end-users' feedback and wear tests.

Key features include:

- + Mechanical stretch of the woven material (sleeves, shoulders, and lower back) allows for an extremely wide range of motion
- + Reducing the woven to its utmost minimum and subsidizing with lightweight and breathable knit guarantees a high level of breathability and airflow, whilst keeping the necessary robustness in highly stressed areas
- + Fit has been specifically made to accommodate either female (62044NL) or male operators (72205NL). Both styles take current anthropometrics of military personnel into consideration
- + Seams are placed in strategic positions to prevent chafing
- + All materials are quick drying
- + Biceps pocket placement, sizing and opening direction have been made to accommodate current military end user's preferences
- + Zipper pull tab cords and hook and loop tabs on sleeve openings are designed to allow easy manipulation with gloves
- + All visible surfaces including the knit body material and loop patches are printed in MultiCam to prevent unnatural contrasting colour blocks and "hard edges"

72205NL HOT WEATHER COMBAT SHIRT | MULTICAM (169) | S-4XL | €199

62044NL WM HOT WEATHER COMBAT SHIRT | MULTICAM (169) | XS-2XL | €195



HOT WEATHER UNIFORM SHIRT

The hot weather uniform shirt combines the classic look of a uniform shirt with functionality and comfort to work in hot climate environments.

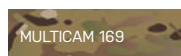
The mechanical stretch woven material allows for maximum range of movement. Fit and sizing has been specifically designed for male (72206NL) and female (62046NL) military operators.

Key features include:

- + MultiCam knit inserts along the entire side of the body from sleeves to armpit to shirt hem increases breathability and fit whilst not compromising on the sharp formal look of this uniform piece
- + Chest and biceps pockets have been sized and placed to accommodate modern military operators needs regarding storage room and accessibility
- + Classic button sleeve cuffs allow the shirt to be worn comfortably with rolled up sleeves
- + Center front button closure allows airflow while maintaining a formal appearance
- + MultiCam printed loop panels on both chest sides, on center front placket and biceps pocket give room for insignia and name tags, while blending in with the printed body material and avoiding sharp contrasts when not covered

72206NL HOT WEATHER UNIFORM SHIRT | MULTICAM (169) | XS-4XL | €199

62046NL WM HOT WEATHER UNIFORM SHIRT | MULTICAM (169) | XS-2XL | €199





HOT WEATHER COMBAT PANT

The combat pant is the corner stone of the Hot Weather Uniform system and a true eyeopener on comfort, versatility, weight, and function.

The two-way mechanical stretch material allows for free range of motion. Stretch on back yoke and crotch area further enhance flexibility, following natural body mechanics. With the pant being entirely constructed from stretch fabric, there is no sharp contrast between stretchy areas and stiff materials, as can be found in products where stretch and non-stretch materials are combined.

Body circumferences undergo changes during entire missions and even on a single day, depending on activity level, hydration, and climate. The hot weather combat pant features a truly adjustable waistband that covers at least three waist sizes (minimum one size up and one size down) allowing for a perfect fit throughout the day.

Key features include:

- + Layers are minimised to reduce weight
- + Internal pocket bags have been replaced with mesh. Back pockets have been consciously erased from the design to make this pant truly light weight
- + Cargo pockets are placed, canted, and sized exactly to end user feedback
- + Internal mesh dividers allow carrying two AR15 /5.56 type magazines in each cargo pocket whilst closing the flap to securely hold the pocket's content in place
- + A nylon laser cut tab placed on the back of the knee towards inner thigh allows keeping external kneepads on unsinged but ready for action
- + Leg openings can be adjusted to personal preference and situation or boot style by hook and loop closure

74102NL HOT WEATHER COMBAT PANT | MULTICAM (169) | 26-40 (EVEN SIZES) (R, L) | €199

64032NL WM HOT WEATHER COMBAT PANT | MULTICAM (169) | 2-20 (EVEN SIZES) (R, L) | €199

MULTICAM 169



2L / DWR
5K/10K



BASTION JACKET



- + 5K/10K waterproof/ breathable, blood borne pathogen resistant
- + N6 overlays on shoulders/upper back body and upper sleeve for added abrasion resistance
- + Light insulation in jacket
- + Two-way center front zipper with internal storm flap
- + Gasket set inside sleeve cuff to keep cold draft out
- + Compression stuff sack with ID print provided to pack jacket in when not using
- + Underarm zipper vents
- + Stationary hood with shock-cord adjustment at hood opening and back hood
- + 10.2cm x 10.2cm (4" x 4") loop patch platform on left and right upper sleeves
- + Articulated sleeves for ergonomic fit
- + Adjustable hem with internal shock-cord system
- + Twill tape on zipper pulls to be accessible with gloved hands
- + Body: 100% nylon plain weave, hardshell 2L, 125g, DWR finish, BBP resistant
- + Overlays: 100% nylon oxford, hardshell 2L, 190g, DWR finish
- + Body insulation: 100% polyester Primaloft® Sliver Eco, 136g
- + Sleeve & hood insulation: 100% polyester Primaloft® Sliver Eco, 81g
- + Lining: 100% nylon ripstop, 58g, DWR finish

48374 BASTION JACKET | BLACK (019), STORM (092), RANGER GREEN (186) | S-3XL | €269

BLACK 019

STORM 092

RANGER GREEN 186

2L / DWR
5K/10K



BASTION PANT



- + 5K/10K waterproof/ breathable, blood borne pathogen resistant
- + Light insulation in pant
- + Running gusset
- + Two-way zipper at each outseam
- + Gaiter set inside leg opening to keep snow out
- + Compression stuff sack with ID print provided to pack pant in when not using
- + Elastic encased at side waistband, wrap belt loop with hook/loop
- + Pass through hand pockets with zipper closure
- + Reinforced knee and leg opening with nylon Oxford fabric overlay
- + Articulated knees for ergonomic fit
- + Adjustable leg opening with hook/loop and snaps
- + Shoelace hook at leg opening
- + Body: 100% nylon plain weave, hardshell 2L, 125g, DWR finish, BBP resistant
- + Overlays: 100% nylon oxford, hardshell 2L, 190g, DWR finish
- + Body insulation: 100% polyester Primaloft® Sliver Eco, 136g
- + Sleeve & hood insulation: 100% polyester Primaloft® Sliver Eco, 81g
- + Lining: 100% nylon ripstop, 58g, DWR finish

48375 BASTION PANT | BLACK (019), STORM (092), RANGER GREEN (186) | S-3XL | €240

BLACK 019

STORM 092

RANGER GREEN 186

2.5L / DWR
15K / 15K



FORCE RAINSHELL JACKET

- + EN 343 Certified
- + 15K/15K waterproof/ breathable
- + Fully seam sealed
- + Two-way center front zipper with internal and external storm flaps.
- + Stationary hood with adhesive in brim, shock-cord adjustment at hood opening, and webbing adjustment at back hood
- + Waterproof left chest zipper pocket, with internal media port
- + Articulated sleeves for ergonomic fit
- + Underarm zipper vents
- + Concealed hand zipper pockets
- + Adjustable hem with internal shock-cord system
- + Twill tape on zipper pulls to be accessible with gloved hands
- + 6 pockets
- + 100% polyester plain weave, hardshell 2.5L, ink print backer, 122g, DWR finish

48362 FORCE RAINSHELL JACKET | BLACK (019), RANGER GREEN (186), DARK NAVY (724) | XS-3XL | €225

BLACK 019

RANGER GREEN 186

DARK NAVY 724

2.5L / DWR
15K / 15K



FORCE RAIN PANT

- + EN 343 Certified
- + 15K/15K waterproof/ breathable
- + Fully seam sealed
- + Shaped waistband with side elastic panels and high back for maximum coverage
- + Wrap style belt loops with hook/ loop closure to easily accommodate duty belt
- + Zipper front fly with snap closure
- + Zippered pass-through hand access at hip both left and right side
- + Back right body zipper pocket
- + Articulated legs for ergonomic fit
- + Waterproof lower leg zipper opening with external storm flap
- + Lower leg hook/ loop adjustment tab for hem adjustment, secure around boots
- + Hammerhead kick panel overlay at back lower legs
- + Twill tape on zipper pulls to be accessible with gloved hands
- + 100% polyester plain weave, hardshell 2.5L, ink print backer, 122g, DWR finish

48363 FORCE RAIN PANT | BLACK (019), RANGER GREEN (186), DARK NAVY (724) | S-3XL | €209

BLACK 019

RANGER GREEN 186

DARK NAVY 724



EXOS RAIN SHELL

- + 100% nylon ripstop, 2.5L hardshell, 105g, DWR
- + 20K/10K waterproof breathable, fully seam sealed
- + Two-way center front zipper with external/internal storm flap and chin guard
- + Stationary adjustable hood with reinforced brim
- + Hand zipper pocket with webbing welt
- + Adjustable hem and hood with internal shock cord system

48370 EXOS RAIN SHELL | BLACK (019), RANGER GREEN (186) | XS-2XL | €149

BLACK 019

RANGER GREEN 186



NEW

WOMEN'S ADVENTURE RAIN SHELL

- + 20k/10k waterproof breathable and fully seam sealed
- + Stationary hood with reinforced brim and adjustable internal shock cord system and back hook/ loop tab
- + Two-way center front zipper with external and internal storm flaps
- + 100% nylon ripstop, 2.5L hardshell, 112g, DWR finish

68018 WM ADVENTURE RAIN SHELL | BLACK (019) | XS-XL | €149

BLACK 019



NEW

PACKABLE WINDBREAKER

- + Stationary hood with elastic adjustment and laminated brim
- + Jacket packs into right hand pocket
- + Laminated underarm vents
- + 100% nylon mini ripstop, PU coating, 58g, DWR

48388 PACKABLE WINDBREAKER | VOLCANIC (098), ENSIGN BLUE (678) | S-2XL | **€89**

68012 WM PACKABLE WINDBREAKER | VOLCANIC (098), CANYON SUNSET (645), CLEAN SAGE (947) | XS-XL | **€89**

VOLCANIC 098

CANYON SUNSET 645

ENSIGN BLUE 678

CLEAN SAGE 947



NEW

WARNER LIGHT WEIGHT JACKET

- + Full zip hooded jacket with fleece lining
- + Static hood with drawcord adjustment
- + Raglan sleeves with elasticated binding at sleeve openings
- + Body: 100% polyester full dull taffeta, 68g, DWR finish | Lining: 100% polyester fleece, 190g

78046 WARNER LT WEIGHT JACKET | BLACK (019), DARK EARTH (282) | S-2XL | **€159**

BLACK 019

DARK EARTH 282



NEW

ADVENTURE PRIMALOFT® JACKET



- + Packable into stuff sack
- + Static hood with elastic opening for snug fit
- + One-way center front zipper with inner chin guard
- + Internal dump pocket with stretch binding opening
- + Body: 100% polyester plain weave, 58g DWR finish | Lining: 100% nylon ripstop, 58g | Fill: Primaloft® gold Series

78057 ADVENTURE PRIMALOFT JKT | BLACK (019), PECAN (1012), RANGER GREEN (186) | S-2XL | **€159**

BLACK 019	PECAN 1012	RANGER GREEN 186
-----------	------------	------------------



NEW

STARLING PRIMALOFT® JACKET



- + Packable into stuff sack
- + Static hood with elastic opening for snug fit
- + Internal dump pocket with stretch binding opening
- + Internal shock cord hem adjustment system
- + Body: 100% polyester plain weave, 58g DWR finish | Lining: 100% nylon ripstop, 58g | Fill: Primaloft® gold Series

68017 STARLING PRIMALOFT JACKET | BLACK (019) | XS-XL | **€159**

BLACK 019



NEW

STARLING PRIMALOFT® VEST



- + Packable into stuff sack
- + One-way center front zipper with inner chin guard
- + On seam zipper pockets
- + Internal dump pocket with stretch binding opening
- + Body: 100% polyester plain weave, 58g DWR finish | Lining: 100% nylon ripstop, 58g | Fill: Primaloft® gold Series

65007 STARLING PRIMALOFT VEST | BLACK (019) | XS-XL | **€119**

BLACK 019



NEW COLOURS

STRATOS 1/4 ZIP

- + Pull over mid layer top
- + Zip front closure with internal chin guard
- + Brushed tricot lined inner collar
- + Raglan sleeves
- + Main label / tag-less heat transfer
- + 5.11° [+] Woven label at front left hem
- + 91% polyester/ 9% elastane grid fleece, 207g, wicking and anti-odor finish

72235 STRATOS 1/4 ZIP | BLACK (019), COYOTE (120), RANGER GREEN (186), MAJOR BROWN (367), DARK NAVY (724) | S-2XL | **€79**

BLACK 019

COYOTE 120

RANGER GREEN 186

MAJOR BROWN 367

DARK NAVY 724



NEW COLOURS

STRATOS FULL ZIP

- + One-way center front zipper with internal chin guard
- + Brushed tricot lined inner collar
- + Hand zipper pockets with dipped cord pullers
- + 91% polyester/ 9% elastane grid fleece, 207g, wicking and anti-odor finish

72244 STRATOS FULL ZIP | BLACK (019), RANGER GREEN (186), ENSIGN BLUE (678), DARK NAVY (724) | S-2XL | **€89**

BLACK 019

RANGER GREEN 186

ENSIGN BLUE 678

DARK NAVY 724



NEW

STRATOS L/S HOODIE

- + Pull over hoodie
- + Elastic binding around hood opening
- + Raglan sleeves with elastic binding cuffs
- + 91% polyester/ 9% elastane stretch grid fleece, 207g, wicking and anti-odor finish

78048 STRATOS L/S HOODIE | VOLCANIC (098), MAJOR BROWN (367) | S-2XL | **€79**

VOLCANIC 098

MAJOR BROWN 367



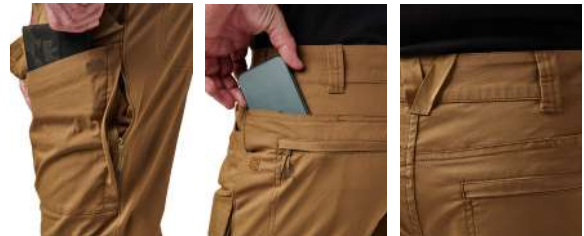
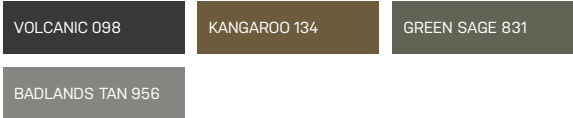


NEW

MERIDIAN PANT

- + Contoured waistband with fly zipper and logo snap closure
- + Front hand pockets with knife reinforcement
- + Back yoke utility drop pockets
- + Body: 72% cotton/ 25% nylon/ 3% elastane poplin, 170g
| Pocketing & Vents: 100% polyester tricot mesh, 102g

74544 MERIDIAN PANT | VOLCANIC (098), KANGAROO (134), SAGE GREEN (831), BADLANDS TAN (956) | 28, 30-36, 38, 40 (30-36) | €95



NEW

MAVERICK BATTLE BELT D-RING

- + Outer belt constructed with proprietary TAC-LAM™ high strength laminate, dual nylon webbing and hook backing for inner belt attachment
- + Laser-cut laminate MOLLE
- + Adjustment end of outer belt secures to inside of belt
- + Inner belt constructed with nylon webbing and loop face
- + Ergonomic curved shape
- + Austri Alpin COBRA® buckle with integrated D-Ring
- + Tie down strap for D-Ring

56785 MAVERICK BATTLE BLT DRING | BLACK (019) | S-2XL | €199

BLACK 019

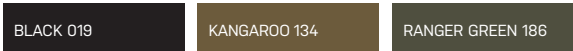


NEW

MAVERICK EDC 1.5 BELT

- + Pre-curved ergonomic design
- + 3.8cm (1.5") width durable dual layer nylon webbing
- + Cobra buckle: 2.5cm (1") male / 3.8cm (1.5") female
- + Hook/loop closure for length adjustment

56804 MAVERICK EDC 1.5 BELT | BLACK (019), KANGAROO (134), RANGER GREEN (186) | S-2XL | €119



D30[®]
.....



NEW

HIGH ABRASION PRO GLOVE

- + Touchscreen compatible zones (back of fingertips and fourchettes)
- + Ring cut for trigger finger
- + Padded knuckle
- + High Abrasion AX Suede palm and overlay
- + D30[®] padded palm overlays with compressed perimeter for increased durability
- + Adjustable Hook and loop wrist closure
- + Neoprene wrist binding keeps out moisture and debris
- + Reinforced cuff seam and pull tab
- + TAA compliant
- + High Abrasion 10W AX[®] Suede palm | Nylon ribspan back of hand, nylon/PU fingers

59393 HIGH ABRASION PRO GLOVE | BLACK (019) | S-2XL | €49



NEW

HIGH ABRASION GLOVE 2.0

- + Touchscreen compatible
- + Ring cut thumb, index, and middle fingers
- + High abrasion synthetic suede palm
- + 4-Way stretch breathable top
- + Adjustable hook and loop wrist closure
- + Padded knuckle
- + Webbing pull tab/ hanger loop
- + TAA compliant; EU manual available
- + EN388:2016- 4121X; EN ISO 21420
- + Nylon Ribspan back of hand / Synthetic Suede Palm

59395 HIGH ABRASION GLV 2.0 | BLACK (019), KANGAROO (134), RANGER GREEN (186) | S-2XL | €32



NEW

STATION GRIP 3.0 GLOVE

- + Touchscreen compatible
- + Molded breathable neoprene knuckle
- + Synthetic suede palm with full textured grip overlay
- + 4-way stretch breathable top
- + Adjustable Hook and loop wrist closure
- + Neoprene wrist keeps out moisture and debris
- + Reinforced cuff seam/ pull tab
- + TAA compliant; EU manual available
- + EN388:2016 - 3121X; EN ISO 21420
- + Nylon Ribspan back of hand / Synthetic Suede Palm

59389 STATION GRIP 3.0 | KANGAROO (134) | S-2XL | €32



NEW

TAC A4 GLOVE

- + Touchscreen compatible
- + Synthetic suede palm with textured grip overlay
- + 4-way stretch breathable top
- + Adjustable hook and loop wrist closure
- + Neoprene wrist keeps out moisture and debris
- + Ring cut index and middle fingers
- + Sweat wipe panel on thumb
- + Reinforced cuff seam/ pull tab
- + TAA compliant; EU manual available
- + EN388:2016 - 3121X; EN ISO 21420
- + Nylon Ribspan back of hand / Synthetic Suede Palm

59380 TAC A4 | BLACK (019) | S-2XL | €32



NEW

HALON FR GLOVE

- + Touchscreen compatible
- + Adjustable leather hook and loop wrist closure
- + Pull tab/ hanger loop
- + TAA compliant
- + EN388:2016; EN ISO 21420, EN 511, EN407
- + Polartec® Power Grid FR | 100% Goatskin leather palm and fourchettes

59392 HALON FR GLOVE | KANGAROO (134) | S-2XL | **€59**



NEW

HOTSHOT FR GLOVE

- + Kevlar top of hand and palm
- + Goatskin leather palm and knuckle
- + Device compatible
- + Reinforced cuff seam
- + Kevlar | Goatskin Leather | EN ISO 21420, EN 407:2020 4121XX, EN 388:2016 + A1:2018 3031

59391 HOTSHOT FR GLOVE | BLACK (019) | S-2XL | **€80**

TAC DRY  PRIMALOFT 



NEW

CALDUS 2.0 GLOVE

- + TAC-DRY® Windproof, water-resistant, BBP shell
- + Device compatible goatskin leather palm and finger
- + Primaloft® Gold 170g (back), Gold needled grip 100g (palm) insulation
- + Brushed fleece lining
- + Neoprene cuff and knuckle padding
- + Wrist cinch strap on back of hand and pull-tab loop on front
- + 85% Nylon + 15% PU with WR coating | Primaloft® Gold insulation

59387 CALDUS 2.0 GLOVE | BLACK (019) | S-2XL | **€69**



NEW

TACLITE® 4.0 GLOVE

- + Touchscreen compatible
- + Form fitting 4-way stretch breathable top
- + Sheepskin palm
- + Adjustable hook and loop wrist closure
- + Wrist sweat wipe cuff
- + TAA compliant; EU manual available
- + EN388:2016 - 3011X; EN ISO 21420
- + Nylon Ribspan back of hand / Sheepskin Palm

59385 TACLITE 4.0 | BLACK (019) | S-2XL | **€42**



NEW COLOURS

HARD TIMES 2 GLOVE

- + Touchscreen compatible
- + Form fitting 4-way stretch breathable top
- + Sheepskin palm
- + Adjustable hook and loop wrist closure
- + Wrist sweat wipe cuff
- + TAA compliant; EU manual available
- + EN388:2016- 3 0 11 X P
- + Genuine Goatskin Leather palm
- + Nylon elastane top of the hand

59379 HARD TIMES 2 | RANGER GREEN (186) | S-2XL | **€75**



NEW

COMPETITION SHOOTING GLOVE 2.0

- + Taper wrap finger tips
- + Ring cut trigger finger
- + Touchscreen compatible vented, synthetic suede palm
- + 4-way stretch breathable top
- + Padded breathable knuckle along with index and middle finger knuckles
- + Adjustable hook and loop wrist closure
- + Sweat wipe panel on thumb
- + Webbing pull tab/ hanger loop
- + TAA compliant; EU manual available
- + EN388:2016- 2121X; EN ISO 21420
- + Nylon Ribspan back of hand / Synthetic Suede Palm

59394 COMPETITION SHTG GLV 2.0 | KANGAROO (134), RANGER GREEN (186) | S-2XL | €37



NEW

COMPETITION INSULATED

- + Primaloft® Gold 40g insulation (back only)
- + Wind, water and BBP resistant shell (back only)
- + E-suede fingertips
- + Neoprene knuckle padding
- + Comfort brushed fleece lining
- + Wrist pull-tab/loop with elastic wrist
- + 85% Nylon + 15% PU with WR coating | Primaloft® Gold 40g insulation | Brushed fleece lining

59386 COMPETITION INSULATED | KANGAROO (134) | S-2XL | €39

TAC DRY  **PRIMALOFT.**



NEW

ADIRON INSULATED GLOVE

- + Tac Dry® Waterproof/breathable/BBP resistant membrane
- + Touchscreen compatible PU palm & fingers
- + Primaloft® Gold insulation: 170g back, Needed w/ grip 100g palm
- + Brushed fleece lining
- + Keystone thumb
- + Handcuffs
- + Elastic wrist with wrist cinch strap
- + TAA compliant
- + EN388:2016; EN ISO 21420; EN511
- + 85% Nylon / 15% PU with W/R Coating shell | PU palm | Primaloft® Gold: 170g insulation (back of hand) with Needed Grip 100g (palm)

59397 ADIRON INSULATED GLOVE | BLACK (019), KANGAROO (134) | S-2XL | €59

PRIMALOFT.



NEW

PATROL CR INSULATED GLOVE

- + Touchscreen compatible
- + Goatskin leather
- + Primaloft® Gold 40g insulation (back of hand)
- + Tricot/bemberg lining
- + Cut resistance liner on palm
- + Wrist loop/tab
- + Elastic wrist
- + TAA compliant
- + EN388:2016; EN ISO 21420, EN 511
- + 100% Goatskin leather | Primaloft® Gold 40g insulation

59800 PATROL CR INSULATED GLOVE | BLACK (019) | S-2XL | €69

TAC DRY  PRIMALOFT.



NEW

URSA 3IN1 INSULATED GLOVE

- + Tac Dry® Waterproof/breathable/BBP resistant membrane
- + Primaloft® Gold insulation: Crossscore 200g back, Needled w/ grip 133g palm
- + Touchscreen compatible Goatskin leather palm and fingers
- + Brushed polyester lining
- + Stand alone / removable Polartec® FR 5 finger liner glove, touchscreen compatible
- + Gauntlet style glove with one handed closure/release system
- + Wrist loop for quick removal/retention on outer glove, finger loop for carabiner+ Keystone thumb
- + Ergonomic, pre-curved fit
- + Thumb nose-wipe panel
- + Wrist strap for cinching
- + TAA compliant
- + EN388:2016; EN ISO 21420; EN511
- + 100% Nylon 5K waterproof shell | 100% Goatskin leather palm w/ cow suede overlay | Primaloft® Gold Insulation | Polartec® FR Dry

59398 URSA 3IN1 INSULATED GLOVE | BLACK (019) | S-2XL | €125



NEW

URSA 3IN1 INSULATED MITT

- + TAC DRY® Waterproof/breathable/BBP resistant membrane
- + Primaloft® Gold insulation: Crossscore 200g back, Needled w/ grip 133g palm
- + Touchscreen compatible Goatskin leather palm and fingers
- + Brushed Polyester lining
- + Stand alone / removable Polartec® FR 5 finger liner glove, touchscreen compatible
- + Gauntlet style mitten with one handed closure/release system
- + Wrist loop for quick removal/retention on outer glove, finger loop for carabiner
- + Keystone thumb+ Ergonomic, pre-curved fit
- + Thumb nose-wipe panel
- + Wrist strap for cinching
- + TAA compliant
- + EN388:2016; EN ISO 21420; EN511
- + 100% Nylon 5K waterproof shell | 100% Goatskin leather palm w/ cow suede overlay | Primaloft® Gold Insulation | Polartec® FR Dry

59399 URSA 3IN1 INSULATED MITT | BLACK (019) | S-2XL | €119

 PRIMALOFT.

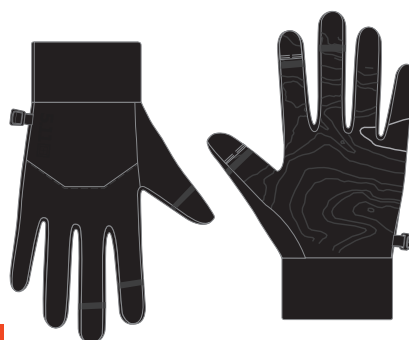


NEW

HAND WARMER

- + Fleece lined interior with Primaloft® Gold 170g insulation
- + Attachment capability: Plate Carrier via MOLLE hooks and and hook/loop flaps (included), Removable waist belt
- + Internal pocket for activated hand warmers
- + External full length zippered front pocket for accessories
- + Elastic side cuff openings
- + Carry pouch with drawstring closure
- + 500D Nylon | 16.5cm H x 38cm H x 5cm D (6.5"H x 15"L x 2"D) | Weight 207g

59396 HAND WARMER | BLACK (019), KANGAROO (134), RANGER GREEN (186), DARK NAVY (724) | 1 SZ | €59



NEW

STRATOS STRETCH FLEECE GLOVE

- + Stretch Grid Fleece
- + Touchscreen compatible thumb and index finger
- + Non-slip silicone grip palm
- + Print bands for ring cut fingers
- + Handcuffs
- + TAA compliant
- + EN388:2016; EN ISO 21420, EN 511
- + 91% polyester / 9% elastane grid fleece with wicking and anti-odor

59801 STRATOS STRTCH FLEECE GLV | BLACK (019) | S-2XL | €29



LOADBEARING GEAR



For 2023 we are introducing the QR Plate Carrier - a durable 500D Nylon construction with patented Sierra Bravo™ Slide quick release buckles for easy on/off and high strength TAC-LAM® laminate laser-cut MOLLE for attaching your gear.

We also see an update to our range bags, as well as additions to our existing LV line of bags with the 45L LV Covert Carry Pack [page 37], a Medic version of the LV10 sling pack and a slightly smaller LV8 sling pack with an 8L capacity [page 39].

The RUSH® 24 is released in a Woodland Camo print [page 40], as well as in an all over Multicam® version with NIR treated materials and trims [page 41].



NEW

QR PLATE CARRIER

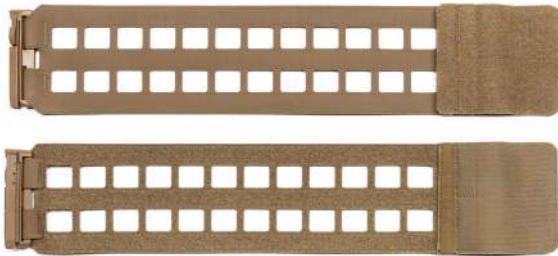
- + Patented Sierra Bravo™ Slide quick release buckle for easy on/off
- + High strength TAC-LAM® laminate laser-cut MOLLE
- + Vertical laser-cut holes for Gear Set™ or Quik Attach platforms
- + Low profile Hypalon® shoulder straps with removable padded shoulder
- + 500D Nylon (main body) | Hypalon® (shoulder straps) shrouds

56676 QR PLATE CARRIER | BLACK (019), KANGAROO (134), RANGER GREEN (186) | S/M, L/XL | €220

BLACK 019

KANGAROO 134

RANGER GREEN 186



NEW

QR PLATE CARRIER EXTENDER

- + Hypalon®/loop laminate laser-cut MOLLE, rear hook/loop system
- + Patented 5.11® Sierra Bravo Slide™ quick release buckle for easy don/doff
- + Comes with a RH and LH cummerbund
- + Integrates with QR Plate Carrier

90167 QR PLATE CARRIER EXTENDER | BLACK (019), KANGAROO (134), RANGER GREEN (186) | 1 SZ | €60

BLACK 019

KANGAROO 134

RANGER GREEN 186

NEW

QR PC SIDE PLATE POUCH

- + Hypalon®/loop laminate laser-cut MOLLE, rear hook/loop system
- + Patented 5.11® Sierra Bravo Slide™ quick release buckle for easy don/doff
- + Comes with a RH and LH cummerbund
- + Integrates with QR Plate Carrier
- + TAC-LAM™ high strength laminate | Polyester Elastane
- + 15cm H x 15cm L x 2.5cm D

56756 QR PC SIDE PLATE POUCH | BLACK (019), KANGAROO (134), RANGER GREEN (186) | 1 SZ | €45

BLACK 019

KANGAROO 134

RANGER GREEN 186



NEW

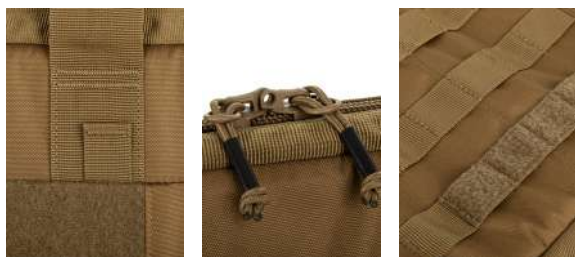
28" SINGLE RIFLE CASE

- + Fully padded rifle case
- + External web MOLLE for pouch attachment
- + Gear Set™ compatible
- + 4x4 loop and 6x1 name tape
- + Top carry handle, removable shoulder strap
- + Internal padded muzzle and butt stock sleeve
- + Internal rifle retention with dual removable straps
- + Abrasion resistant external webbing perimeter
- + YKK® lockable zippers
- + 5.11® signature Center Line™ design
- + 31.8cm H x 76.2cm L x 7.6cm D (12.5" H x 30" L x 3" D)
- + 600D Polyester
- + Weight: 1 kg

56764 28" SINGLE RIFLE CASE | BLACK (019), KANGAROO (134)
| 1 SZ | €89

BLACK 019

KANGAROO 134



NEW

36" DOUBLE RIFLE CASE

- + Holds two full size rifles up to 91.4cm (36")
- + Fully padded construction
- + ID loop
- + Removable and adjustable padded divider
- + Internal rifle retention capability with Internal MOLLE
- + Removable retention straps (4 straps included)
- + Removable backpack straps and single shoulder strap, top carry handle
- + External pocket with elastic bands for mags, eye pro, ear pro, etc
- + External MOLLE panel for pouch attachment capability
- + YKK® lockable zippers
- + 5.11® signature Center Line™ design
- + 31.8cm H x 96.5cm L x 10.2cm D (12.5" H x 38" L x 4" D)
- + 600D Polyester
- + Weight: 2.3 kg

56765 36" DOUBLE RIFLE CASE | BLACK (019) | 1 SZ | €189

BLACK 019





NEW

42" DOUBLE RIFLE CASE

- + Holds two full size rifles up to 106.7cm (42")
- + Fully padded construction
- + ID / Name Tape
- + Removable and adjustable padded divider
- + Internal rifle retention capability with Internal MOLLE
- + Removable retention straps (4 straps included)
- + Backpack straps and top carry handle
- + External pockets with a padded pistol sleeve, space for mags, eye pro, ear pro, etc
- + External MOLLE panel for pouch attachment capability
- + YKK® lockable zippers
- + 5.11® signature Center Line™ design
- + 31.8cm H x 111.8cm L x 10.2cm D (12.5" H x 44" L x 4" D)
- + 600D Polyester
- + Weight: 2.5 kg

56766 42" DOUBLE RIFLE CASE | BLACK (019) | 1 SZ | €199

BLACK 019





NEW COLOURS

LV M4

- + Sized to accommodate an M4 with a collapsed stock
- + Encased weapon protection provided in the main compartment with foam padding and PE board on back and bottom panels
- + Web MOLLE on internal back panel with removable rifle retention strap
- + Top fleece lined media/eyewear pocket
- + Bottom front compartment with loop face laser-cut MOLLE panel and mesh zippered pocket
- + Padded back panel
- + Removable shoulder straps for dual strap backpack carry or single strap sling carry with crossbody strap; For sling carry, the removable straps with ergonomic design allow the user to choose left or right shoulder carry
- + Removable sternum strap that also doubles as the crossbody strap connection point
- + Quick release S/R buckles on shoulder straps
- + Grab and go handles at top and side for easy carry
- + Tuckable logos for complete low-vis option
- + Durable water-resistant fabric back coating repels moisture
- + Rugged self-healing YKK™ zippers throughout
- + Durable Duraflex™ hardware
- + 840D Nylon
- + 81.3cm H x 30.5 L x 5cm D (32"H x 12"L x 2"D) (main compartment)
- + 19.5-liter total capacity

56438 LV M4 | IRON GREY (042), PYTHON (256), TURBULENCE (545), BLUEBLOOD (622) | 1 SZ | €155

IRON GREY 042

PYTHON 256

TURBULENCE 545

BLUEBLOOD 622



NEW COLOURS

LV M4 SHORTY

- + 5.11's signature Center Line™ design
- + Front pocket with admin org and MOLLE panel
- + Main compartment with suspended padded laptop sleeve and mesh zippered pocket
- + Secondary weapon compartment with reinforced muzzle pocket with adjustable divider, web loops and two rifle retention straps
- + Up to 10.2cm (4") drop down system in weapon compartment with 2.5cm (1") increments via G hook
- + Lower webbing straps for extra cargo or attaching the LV6
- + Tuckable logos for low vis
- + Triglides for optional waist belt attachment
- + Flex cuff channel on back panel
- + Aluminum frame, HDPE board with closed cell foam padded back panel
- + Quick release shoulder straps with removable sternum strap
- + Top and side carry handle
- + 840D Nylon
- + 73.7cm H x 30.5cm L x 5cm D (29"H x 12"L x 2"D) (main compartment)
- + 18.3-liter total capacity

56474 LV M4 SHORTY | BLACK (019), IRON GREY (042), PYTHON (256), TURBULENCE (545), BLUEBLOOD (622) | 1 SZ | €145

BLACK 019

IRON GREY 042

PYTHON 256

TURBULENCE 545

BLUEBLOOD 622

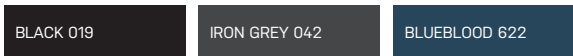


NEW

LV COVERT CARRY PACK

- + 5.11®'s signature Center Line™ design
- + Front pocket with admin org and MOLLE panel
- + Main compartment with suspended padded laptop sleeve and mesh zippered pocket
- + Secondary weapon compartment with reinforced muzzle pocket with adjustable divider, web loops and two rifle retention straps
- + Up to 10.2cm (4") drop down system in weapon compartment with 2.5cm (1") increments via G hook
- + Lower webbing straps for extra cargo or attaching the LV6
- + Tuckable logos for low vis
- + Triglides for optional waist belt attachment
- + Flex cuff channel on back panel
- + Aluminum frame, HDPE board with closed cell foam padded back panel
- + Quick release shoulder straps with removable sternum strap
- + Top and side carry handle
- + 840D Nylon | 60cm H (71cm w/ drop down) x 33cm W x 20.3cm D (24"H (28" w/ drop down) x 13"W x 8"D) | Weight 2.3kg | Capacity 45L

56683 LV COVERT CARRY PACK | BLACK (019), IRON GREY (042), BLUEBLOOD (622) | 1 SZ | **€189**

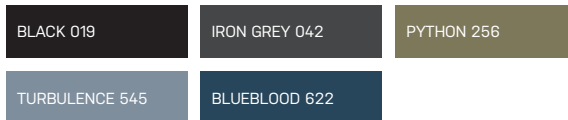


NEW COLOURS

LV18 2.0 BACKPACK

- + Featuring 5.11®'s signature Center Line™ design
- + Front pocket with zippered pocket, admin org and slip pockets
- + Ambidextrous side entry CCW compartment with loop panel and removable retention strap
- + Main compartment with padded laptop sleeve, securing strap and rear access
- + Secondary compartment with two zippered pockets and a slip pocket
- + Side compressions straps and expandable water bottle pockets
- + Lower webbing straps for extra cargo or attaching the LV6
- + Tuckable logos for low vis
- + Triglides for optional waist belt attachment
- + Flex cuff channel on back panel
- + Padded back panel and quick release shoulder straps with removable sternum strap
- + 840D Nylon | 19.75"H x 11"W x 5.5"D | 30-liter total capacity | Weight 1.25kg

56700 LV18 2.0 BACKPACK | BLACK (019), IRON GREY (042), PYTHON (256), TURBULENCE (545), BLUEBLOOD (622) | 1 SZ | **€165**





NEW COLOURS

LV10 2.0 SLING PACK

- + 5.11's signature Center Line™ design
- + Internal loop faced laser-cut MOLLE, padded tablet sleeve, and admin org
- + Rear CCW compartment with "hot pull" system, loop panel, and removable holster retention strap
- + Padded back panel and quick release single shoulder strap with removable sternum strap and CAM buckle
- + Fleece lined top zipper pocket
- + Front zippered pocket
- + Side compressions straps and additional grab handles
- + Bottom webbing straps with expandable water bottle pocket
- + Quick access to internal lid dual mesh pockets
- + Flex cuff channel on back panel
- + Tuckable logos for low vis
- + 840D Nylon | 26.7cm H x 41.3cm W x 14.6cm D (10.5"H x 16.25"W x 5.75"D) | 13-liter total capacity | Weight 0.94kg

56701 LV10 2.0 SLING PACK | BLACK (019), IRON GREY (042), PYTHON (256), TURBULENCE (545), BLUEBLOOD (622) | 1 SZ | **€129**

BLACK 019	IRON GREY 042	PYTHON 256
TURBULENCE 545	BLUEBLOOD 622	

NEW

LV10 UTILITY/MED SLING

- + 5.11's signature Center Line™ design
- + Rear CCW compartment with HotPull system, loop panel, and webbing system for holster
- + Internal tear out mesh pocket on front internal panel
- + Removable internal dividers and adjustable bungee system
- + Padded back panel, quick release single shoulder strap, removable sternum strap, CAM buckle
- + Top and front zippered pockets
- + Side compressions straps with quick release buckle and additional grab handles
- + Flex cuff channel on back panel
- + Tuckable logos for low vis
- + Tuckable 1x1 loop for Med Cross Patch
- + 840D Nylon | 26.7cm H x 41.3cm W x 14.5cm D (10.5"H x 16.25"W x 5.7"D) | Weight 1.1kg | 13-liter total capacity

56791 LV10 UTILITY/MED SLING | BLACK (019) | 1 SZ | **€139**

BLACK 019



NEW COLOURS

LV6 2.0 WAIST PACK

- + 5.11®'s signature Center Line™ design
- + Front zippered pocket
- + Main compartment with loop back panel and mesh pockets
- + Hidden slip compartment between main compartment and back wall with hook/loop closure
- + Rear mesh pocket with hook/loop closure
- + Top and bottom webbing loops for attaching to LV18 backpack
- + Removable gate keeper with adjustable shoulder strap for crossbody or waist carry configuration
- + Quick release shoulder/waist strap
- + Additional webbing strap for crossbody or waist stabilization
- + Side compression straps
- + Tuckable logos for low vis
- + 840D Nylon | 14cm H x 21.6cm L x 7.6cm D (5.5"H x 8.5"L x 3.0"D) | 3-liter total capacity | Weight 0.3kg

56702 LV6 2.0 WAIST PACK | BLACK (019), IRON GREY (042), PYTHON (256), TURBULENCE (545), BLUEBLOOD (622) | 1 SZ | **€49**

BLACK 019

IRON GREY 042

PYTHON 256

TURBULENCE 545

BLUEBLOOD 622



NEW

LV8 SLING PACK

- + 5.11®'s signature Center Line™ design
- + Ambidextrous shoulder strap for sling carry w/ quick release buckle, removable sternum strap and CAM buckle
- + Internal admin org and pockets; Padded sleeve with strap closure; Loop face laser-cut MOLLE
- + CCW compartment with full loop panel, and removable holster strap, hot pulls – fit Glock 17
- + Padded back panel; flex cuff channel
- + External nylon lined zippered pocket
- + External fleece lined device/media pocket
- + Bottom webbing straps
- + Tuckable logos for low vis
- + 1 Top and 2 side grab handles
- + 840D Nylon | 21.6cm H x 35.6cm W x 10.16 D (8.5"H x 14"W x 4"D) | Weight 1.2kg | 8-liter total capacity

56792 LV8 SLING PACK | BLACK (019) | 1 SZ | **€89**

BLACK 019



NEW

RUSH® 24 2.0 WOODLAND CAMO

- + Hidden CCW compartment with loop panel
- + Dual internal mesh pockets, padded laptop sleeve
- + Hydration and RUSH® Tier compatible
- + Fleece lined pocket, dual front and side zippered pockets
- + 5.11®'s signature CenterLine™ design
- + External web MOLLE with nametape and flag loop
- + 1050D Nylon
- + 50.8cm H x 31.8cm L x 25.4cm D (20" H x 12.5" L x 10"D) | 37-liter total capacity
- + Weight 1.7kg

56563WL RUSH24 2.0 WOODLAND CAMO | WOODLAND CAM (938) | 1 SZ | €159

WOODLAND CAM 938



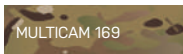
NEW

RUSH° 24 2.0 NIR BACKPACK

CORDURA

- + NIR enhanced materials and trims
- + Hidden CCW compartment with loop panel
- + Dual internal mesh pockets, padded laptop sleeve
- + Hydration and RUSH° Tier compatible
- + Fleece lined pocket, dual front and side zippered pockets
- + 5.11°'s signature CenterLine™ design
- + External web MOLLE with nametape and flag loop
- + 1000D Cordura® Nylon
- + 50.8cm H x 31.8cm L x 25.4cm D (20" H x 12.5" L x 10"D) | 37-liter total capacity
- + Weight 1.9kg

56564NIR RUSH24 2.0 NIR BACKPACK | MULTICAM (169) | 1 SZ | **€230**



MULTICAM 169

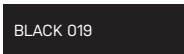


NEW

MOAB™8

- + 5.11°'s signature CenterLine™ design
- + External web MOLLE on front and side panels
- + Ambidextrous sling shoulder strap system
- + MOLLE system on shoulder strap
- + Back-Up Belt System™ compatible compartment with break-away hook and loop
- + Large front pocket with interior admin / accessory org
- + Main compartment with internal pockets
- + Fleece lined eyewear pocket
- + Rear hydration pocket w/ pass-through port
- + Hook & loop flag patch
- + 1050D Nylon | 40.6cm H x 20.3cm W x 17.8cm D (16"H x 8"W x 7"D) | Weight 1.1 kg | Capacity 13L

56810 MOAB8 | BLACK (019) | 1 SZ | **€109**



BLACK 019



NEW

RUSH® BELT KIT

- + Padded waist belt kit that can attach to 3.8cm (1.5") triglides in 5.11® pack line
- + Comes with RH and LH straps
- + Quick release S/R buckle with elastic keepers
- + MOLLE platform for pouch attachment capability
- + 500D Nylon
- + 10.2cm H x 23.5cm L (4"H x 9.25"L)
- + Weight: 0.11 kg

56771 RUSH BELT KIT | BLACK (019), KANGAROO (134), RANGER GREEN (186) | 1 SZ | €20

BLACK 019

KANGAROO 134

RANGER GREEN 186





NEW

FLEX ADMIN POUCH LARGE

- + Laser cut platform with loop face
- + Zipper closure with adjustable drawstring cord bridge
- + Internal loop platform, slip pockets & elastic bandoliers
- + Adjustable/removable bungee cord for securing a phone or accessories
- + Flex-HT™ mounting system
- + Elastic band on bottom panel
- + Internal PE board in front panel for easy work surface
- + 500D Nylon | 15.2cm H x 20.3cm W x 5cm D (6"H x 8"W x 2"D) | 1-liter total capacity

56811 FLEX ADMIN POUCH LG | BLACK (019) | 1 SZ | €49

BLACK 019



NEW

FLEX UTILITY POUCH

- + Stretch mesh pouch with a rear and front pouch designed to carry multiple items
- + Pouch bungee kit included
- + Flex-HT™ mounting system
- + 14cm H x 7.6cm W (5.5"H x 3"W)
- + Durable stretch woven 95% Nylon / 5% PU | 14cm H x 7.6cm W (5.5"H x 3"W)

56812 FLEX UTILITY POUCH | BLACK (019) | 1 SZ | €29

BLACK 019



NEW

EGOR POUCH LIMA

- + Combination of internal pockets and elastic bands
- + Gear loop for carabiner attachment
- + External loop for name tape or Light Marker attachment
- + Removable elastic band accessory holder
- + 500D Nylon | 17.8cm H x 12.7cm W x 5cm D (7"H x 5"W x 2"D) | 1-liter total capacity

56813 EGOR POUCH LIMA | BLACK (019) | 1 SZ | €35

BLACK 019



NEW

FLEX TRAUMA SHEARS HOLDER

- + Flex-HT™ Mounting System
- + Ambidextrous
- + Internal webbing panel for extra durability
- + Retention strap to hold shears in place
- + Hidden magnet for quick temporary attachment
- + 500D Nylon | 12.7cm H x 5cm W (5"H x 2"W)

56814 FLEX TRAUMA SHEARS HOLDER | BLACK (019) | 1 SZ | €19

BLACK 019



NEW COLOURS

COVRT18™ 2.0

- + 5.11's signature CenterLine™ design
- + Front pockets, removable ID panel, admin, MOLLE and loop
- + Shove-It compartment, water bottle pockets
- + Hidden CCW compartment
- + Hydration/TSA checkpoint friendly laptop compartment
- + 500D Nylon | 840D Nylon
- + 48.2cm H x 26.7cm L x 16.5cm D (19"H x 10.5"L x 6.5"D)
- + 32-liter total capacity
- + Weight 1.2kg

56634 COVRT18 2.0 | BLACK (0190), COYOTE (120), GT PRL GREY (422), PACIFIC NAVY (721) | 1 SZ | €145

BLACK 019

COYOTE 120

GT PRL GREY 422

PACIFIC NAVY 721





NEW

ALLHAULA DUFFELS

- + Waterproof TPU Coated durable material
- + Stowable shoulder straps w/ MOLLE attachment capability
- + Skyweight Hip Belt compatible
- + Adjustable internal compression panel with zippered mesh pocket; Vertical and horizontal orientation

- + Available in different sizes:
 45L: 26.7cm H x 55.9cm L x 29.2cm D (10.5" H x 22" L x 11.5"D)
 65L: 29.2cm H x 63.5cm L x 33cm D (11.5" H x 25" L x 13"D)
 90L: 31.8 cm H x 76.2cm L x 36.8cm D (12.5" H x 30" L x 14.5"D)
- + 840D Nylon w/ TPU Coating

56815 ALLHAULA DUFFEL 45L | VOLCANIC (098), OLD GOLD (541) | 1 SZ | €169

56816 ALLHAULA DUFFEL 65L | VOLCANIC (098), OLD GOLD (541) | 1 SZ | €189

56817 ALLHAULA DUFFEL 90L | VOLCANIC (098) | 1 SZ | €209





NEW

SKYWEIGHT 36L PACK

- + Dual external side stretch water bottle pockets
- + Front shove-it compartment
- + Removable hip belt; Laser-cut laminate MOLLE and quick release buckle
- + Safety orange concealed rain cover, bottom gear straps
- + 330D Nylon Ripstop (main body) | 200D Nylon (rainfly)
- + Hip belt available in 2 sizes
- + 55.9cm H x 33cm W x 20.9cm D (22"H x 13"W x 8.5"D) (S/M)
- + 60.9cm H x 33cm W x 20.9cm D (24"H x 13"W x 8.5"D) (L/XL)
- + 36-liter total capacity
- + Weight: 1.3 kg

56768 SKYWEIGHT 36L PACK | VOLCANIC (098), MAJOR BROWN (367), SAGE GREEN (831) | S/M, L/XL | **€219**

VOLCANIC 098

MAJOR BROWN 367

SAGE GREEN 831



NEW

SKYWEIGHT 24L PACK

- + Dual external stretch water bottle pockets
- + External first grabs top pocket
- + Safety orange concealed rain cover
- + Removable hip belt; Laser-cut laminate MOLLE and quick release buckle
- + 330D Nylon Ripstop (main body) | 200D Nylon (rainfly)
- + Hip belt available in 2 sizes
- + 55.9cm H x 22.9cm W x 20.9cm D (22"H x 9"W x 8.25"D) (S/M)
- + 60.9cm H x 22.9cm W x 20.9cm D (24"H x 9"W x 8.25"D) (L/XL)
- + 24-liter total capacity
- + Weight: 1.1 kg

56767 SKYWEIGHT 24L PACK | VOLCANIC (098), MAJOR BROWN (367), SAGE GREEN (831) | S/M, L/XL | **€169**

VOLCANIC 098

MAJOR BROWN 367

SAGE GREEN 831



NEW

SKYWEIGHT SLING PACK

- + Ambidextrous, removable single shoulder strap with quick release buckle
- + Ambidextrous external stretch water bottle pocket with drawstring cord
- + Hydration compatible (most 2L bladders)
- + Padded back panel with airflow channel
- + 330D Nylon Mini Rip | 17.8cm H x 43.2cm W x 12.7cm D (7"H x 17"W x 5"D) | Weight 0.73kg | 11-liter total capacity

56818 SKYWEIGHT SLING PACK | VOLCANIC (098), SAGE GREEN (831) | 1 SZ | €99

VOLCANIC 098

SAGE GREEN 831



NEW

SKYWEIGHT SURVIVAL CHEST PACK

- + Ambidextrous CCW compartment with internal loop panel and elastic bands for mags, sized for compact pistols
- + External front laminate MOLLE panel for pouch attachment
- + Padded rear pass through compatible with Skyweight and RUSH® hip belts and any standard belt
- + 330D Nylon Ripstop
- + 15.2cm H x 25.4cm W x 4.4cm D (6"H x 10"W x 1.75"D)
- + 1-liter total capacity
- + Weight 0.27kg

56769 SKYWEIGHT SRVL CHEST PK | VOLCANIC (098), MAJOR BROWN (367), SAGE GREEN (831) | 1 SZ | **€49**

VOLCANIC 098

MAJOR BROWN 367

SAGE GREEN 831



NEW

SKYWEIGHT UTILITY CHEST PACK

- + Ambidextrous rear CCW compartment
- + Main compartment with internal org and gusseted opening
- + Padded rear pass through compatible with Skyweight and RUSH® hip belts and any standard belt
- + Front zippered pocket
- + 330D Nylon Ripstop
- + 15.2cm H x 25.4cm W x 6.4cm D (6"H x 10"W x 2.5"D)
- + 2-liter total capacity
- + Weight 0.45kg

56770 SKYWEIGHT UTIL CHEST PK | VOLCANIC (098), MAJOR BROWN (367), SAGE GREEN (831) | 1 SZ | **€69**

VOLCANIC 098

MAJOR BROWN 367

SAGE GREEN 831



NEW

SKYWEIGHT ON THE GO POUCH

- + MINIMOLL™ attachment system
- + Internal slip and mesh pockets
- + Bottom hook/loop straps
- + External zippered stretch pocket
- + 330D Nylon Mini Rip | 10.2cm H x 17.8cm W x 5cm D (4"H x 7"W x 2"D) | Capacity 1L

56822 SKYWEIGHT ON THE GO POUCH | VOLCANIC (098), SAGE GREEN (831) | 1 SZ | **€35**

VOLCANIC 098

SAGE GREEN 831



NEW

SKYWEIGHT ACCESS POUCH

- + Center opening stretch woven main compartment with grab pulls
- + MINIMOLL™ attachment system
- + 87% Polyester / 13% Elastane | 17.8cm H x 7.6cm W x 2.5cm D (7"H x 3"W x 1"D) | Capacity 0.3 L

56823 SKYWEIGHT ACCESS POUCH | VOLCANIC (098), RANGER GREEN (186) | 1 SZ | **€19**

VOLCANIC 098

RANGER GREEN 186



NEW

MOLLE PACKABLE PACK

- + Packable in integrated self pocket with minimal MOLLE strap system for attachment capability
- + External side stretch woven water bottle pockets
- + Mesh shoulder straps with laser-cut MOLLE and removable sternum strap
- + Hydration compatible
- + 70D Recycled Nylon Ripstop PU
- + 45.7cm H x 22.9cm W x 14.6D (18"H x 9"W x 5.75"D)
- + 12-liter total capacity
- + Weight: 0.3 kg

56772 MOLLE PACKABLE PACK | VOLCANIC (098), MAJOR BROWN (367), SAGE GREEN (831), BDLT TN PCTN (1055) | 1 SZ | €59

VOLCANIC 098	MAJOR BROWN 367	SAGE GREEN 831
BDLT TN PCTN 1055		



NEW

MOLLE PACKABLE SLING PACK

- + Ambidextrous sling mesh shoulder strap with laser-cut MOLLE and removable crossbody strap
- + Packable in integrated self pocket with minimal MOLLE strap system for attachment capability
- + External front stretch woven water bottle pockets+ Hydration compatible
- + 70D Recycled Nylon Ripstop PU
- + 41.3cm H x 20.3cm W x 12.7cm D (16.25"H x 8"W x 5"D)
- + 8-liter total capacity
- + Weight: 0.3 kg

56773 MOLLE PACKABLE SLING PACK | VOLCANIC (098), MAJOR BROWN (367), SAGE GREEN (831), BDLT TN PCTN (1055) | 1 SZ | €49

VOLCANIC 098	MAJOR BROWN 367	SAGE GREEN 831
BDLT TN PCTN 1055		

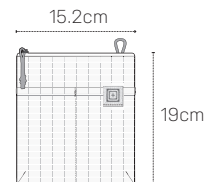
NEW

MOLLE PACKABLE PONCHO

- + Water-resistant packable poncho with waterproof silicone ultra tensile strength coating
- + Packable in integrated self pocket with minimal MOLLE system for attachment capability
- + Adjustable hood
- + Corner and edge webbing loops for tie down / alternative shelter
- + 40D Sil/Nylon 1500mm PU
- + 142.2cm W x 213.4cm L (56"W x 84"L)
- + Weight: 0.3 kg

56774 MOLLE PACKABLE PONCHO | OLD GOLD (541) | 1 SZ | €89

OLD GOLD 541





K-9 GEAR



Our long-awaited line of products for your trusted four-legged partner is here! We are launching two separate lines of K-9 Gear - the AROS collection [page 52] for professional working dogs with an ID-ready harness, as well as 2 different sized collars; and the Mission Ready™ every day collection [page 53] with a harness, modular leash, standard leash and collar all available in 3 distinct colours.



NEW

AROS K9 HARNESS

- + AustriAlpin® COBRA® buckle
- + 100% 4.4cm (1.75") nylon webbing, 2.2mm thickness
- + Adjustable neck, chest and leg through buckles, triglides and hook/loop w/ elastic keepers
- + Chest panel with padding
- + Back grab handle in horizontal orientation with flat lay capability
- + Metal V ring for lead attachment
- + Loop for POLICE ID Panel – both sides
- + Removable Loop panel for agency patch ID

56786 AROS K9 HARNESS | BLACK (019) | S-XL | €189

BLACK 019



NEW

AROS K9 COLLAR 1.0

- + AustriAlpin® COBRA® buckle
- + 2.5cm (1") wide nylon collar with triglide adjustment
- + One loop ID panel
- + Metal D-Ring

56828 AROS K9 COLLAR 1.0 | BLACK (019), RANGER GREEN (186) | S-L | €99

BLACK 019

RANGER GREEN 186



NEW

AROS K9 COLLAR 1.5

- + AustriAlpin® COBRA® buckle
- + 3.8cm (1.5") wide nylon collar with triglide adjustment
- + One loop ID panel
- + Handle with flat lay capability
- + Metal V ring

56787 AROS K9 COLLAR 1.5 | BLACK (019) | S-L | €109

BLACK 019



NEW

MISSION READY™ DOG HARNESS

- + Padded harness with adjustable webbing straps
- + Adjustable quick release in leg – adjustment capable on other side as well
- + Chest and belly panel with foam padding and mesh underside
- + Back grab handle in vertical orientation
- + Chest and Spine aluminum V ring for leash attachment
- + Loop for ID Panel with MOLLE
- + Plastic Duraflex S/R buckles and trigrilides
- + Reflectivity

56789 MISSION READY DOG HARNESS | VOLCANIC (098), FLUORSCN ORG (400) BDL TN PCTN (1055) | S, M, L/XL | €59

VOLCANIC 098

FLUORESCENT ORANGE 400

BDLD TN PCTN 1055



NEW

MISSION READY™ MODULAR DOG LEASH

- + 2.5cm (1") wide nylon webbing, 1.7mm thickness
- + Adjustable up to 7' long
- + Tubular webbing bungee system
- + Adjustable padded neoprene handle with adjustable side release buckle
- + Held by hand or worn on waist
- + Accessory loop
- + Webbing handle near hook end
- + Swiveling metal hook
- + Loop for ID name tape
- + Reflective

56790 MISSION READY MODULAR DOG LEASH | VOLCANIC (098), FLUORSCN ORG (400) BDL TN PCTN (1055) | 1 SZ | €45

VOLCANIC 098

FLUORESCENT ORANGE 400

BDLD TN PCTN 1055



NEW

MISSION READY™ DOG LEASH

- + 5' long
- + Padded neoprene handle with accessory loop
- + Webbing handle near hook end
- + Swiveling metal hook
- + Loop for ID name tape
- + Reflective

56803 MISSION READY DOG LEASH | VOLCANIC (098), FLUORSCN ORG (400) BDL TN PCTN (1055) | 1 SZ | €29

VOLCANIC 098

FLUORESCENT ORANGE 400

BDLD TN PCTN 1055

NEW

MISSION READY™ DOG COLLAR

- + 1.9cm (3/4") (SM) and 2.5cm (1") (MD and LG) wide nylon webbing, 1.7mm thickness
- + 3 sizes: 27.9-35.5cm, 35.5-50.8cm, 50.8-66cm (11-14", 14-20", 20-26")
- + Duraflex® side release buckle
- + Trigrilide for adjustment
- + Aluminum V ring
- + Loop for name tape

56809 MISSION READY DOG COLLAR | VOLCANIC (098), FLUORSCN ORG (400) BDL TN PCTN (1055) | S-L | €25

VOLCANIC 098

FLUORESCENT ORANGE 400

BDLD TN PCTN 1055

A close-up photograph of the sole of a 5.11 tactical boot. The boot is positioned on a surface of coarse gravel. The sole features a complex, multi-directional tread pattern with deep grooves and raised lugs, designed for enhanced grip and stability. The boot's upper is made of a light-colored, textured fabric, possibly a ripstop or canvas, with a blue mesh section visible on the side. The overall aesthetic is rugged and functional, typical of military or law enforcement footwear.

FOOTWEAR



The Speed 4.0 series of boots get an extension with the Speed 4.0 8" AR670-1 [page 56], a lightweight boot made from suede leather and 1200D nylon for durability. Proven in the field and loaded with value, this boot is AR670-1 compliant, features Force Foam® heel cushioning, an Ortholite® footbed, and a high-abrasion mesh tongue that make sure your feet are feeling good no matter the job.

The rugged Ranger 2.0 is now available in a Mid and a Women's version [page 58], and we are excited to introduce the Foley [page 59] - an allrounder for all day comfort with slip-resistant Vibram® outsole.



NEW

SPEED 4.0 8" AR670-1

Ortholite®

- + AR 670-1 Compliant
- + High abrasion breathable mesh tongue
- + 5.11® Heat Deflect insole
- + Ortholite® footbed
- + ASTM Slip & oil resistant outsole
- + Outsole stitching
- + Roughed out leather
- + 1200D Nylon High Abrasion upper

12459 SPEED 4.0 8" AR670-1 | US DK COYOTE (389) | REGULAR: 4, 5, 6-12, 13, 14, 15 | **€105**

US DK COYOTE 389



NEW COLOURS

5.11° A/T™ MID

Ortholite®

- + A.T.L.A.S. All Terrain Load Assistance System
- + 3D molded TPR toe and heel protection
- + Welded mesh upper
- + ASTM slip and oil resistant high traction outsole
- + 5.11° A.T.L.A.S Technology Support Plate
- + Echo Foam™ high rebound/energy return PU and Force Foam® lightweight PU impact cushioning
- + Ortholite® footbed
- + 5.11° A.T.L.A.S. Technology

12430 5.11 A/T MID | BLACK (019), DARK COYOTE (106), COYOTE (120), RANGER GREEN (186), SAND DUNE (344), MAJOR BROWN (367), ANCIENT FOSSIL (495), UMBER BROWN (496), PACIFIC NAVY (721) | REGULAR: 4, 5, 6-12, 13, 14 | **€149**

BLACK 019	DARK COYOTE 106	COYOTE 120
RANGER GREEN 186	SAND DUNE 344	MAJOR BROWN 367
ANCIENT FOSSIL 495	UMBER BROWN 496	PACIFIC NAVY 721

NEW COLOURS

5.11° A/T™ MID WATERPROOF

TAC DRY
WATERPROOF + BBP

- + Full rubber outsole with ASTM slip and oil resistance.
- + 5.11° Tac Dry® Waterproof and Blood Borne Pathogen resistant membrane
- + Dual Density PU midsole with 5.11° Echo Foam™ in the forefoot and 5.11° Force Foam® in the heel
- + Welded ripstop upper, 3D molded TPR toe and heel protection

12446 5.11 A/T MID WP | BLACK (019), DARK COYOTE (106), RANGER GREEN (186), UMBER BROWN (496) | REGULAR: 4, 5, 6-12, 13, 14 | **€159**

BLACK 019	DARK COYOTE 106	RANGER GREEN 186
UMBER BROWN 496		



NEW

RANGER 2.0 MID

- + Suede upper with breathable mesh construction
- + Scratch Rubber toe cap for added durability.
- + 5.11® Echo Lite high rebound EVA midsole
- + All Terrain Load Assistance System
- + Multi-direction rubber outsole lug pattern

12478 RANGER 2.0 MID | ENSIGN BLUE (678), RUBBER (1060) |
REGULAR: 4, 5, 6-12, 13, 14, 15 | **€129**

ENSIGN BLUE 678

RUBBER 1060



NEW

WOMEN'S RANGER 2.0

- + Suede upper with breathable mesh construction
- + Scratch Rubber toe cap for added durability.
- + 5.11® Echo Lite high rebound EVA midsole
- + All Terrain Load Assistance System
- + Multi-direction rubber outsole lug pattern

12458 RANGER 2.0 WMN | VOLCANIC (098), GT PRL GREY (422) |
REGULAR: 6-10 | **€119**

VOLCANIC 098

GT PRL GREY 422



NEW

5.11° FOLEY MID



- + Full-nylon upper for lightweight and maximum durability
- + 5.11° x Vibram full rubber outsole for traction and durability on multiple surfaces
- + Drop-in foam insole
- + Built from the inside-out for all-day comfort and durability

12475 5.11 FOLEY MID | TRIPLE BLACK (007) | REGULAR: 4, 5, 6-12, 13, 14, 15 | **€99**

TRIPLE BLACK 007



NEW

5.11° FOLEY LOW



- + Full-nylon upper for lightweight and maximum durability
- + 5.11° x Vibram full rubber outsole for traction and durability on multiple surfaces
- + Drop-in foam insole
- + Built from the inside-out for all-day comfort and durability

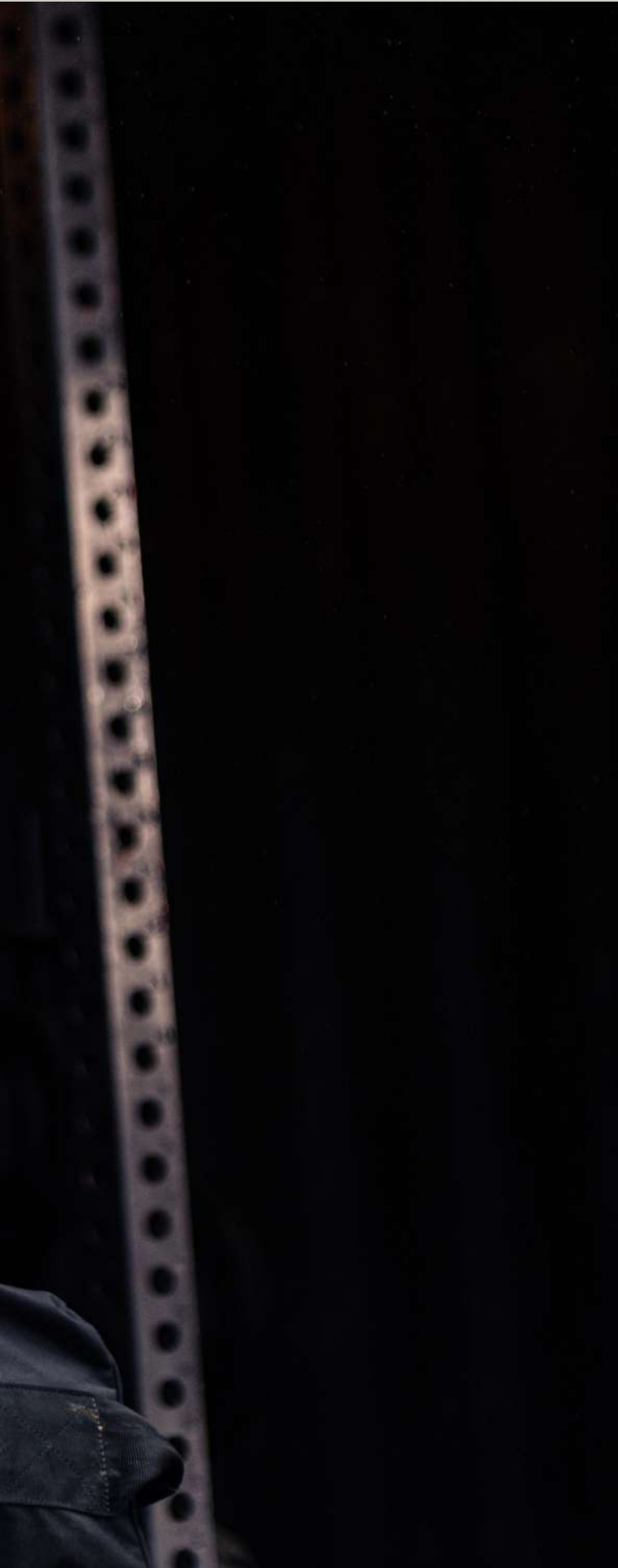
12476 5.11 FOLEY LOW | BLACK (019), ELMWOOD (975) | REGULAR: 4, 5, 6-12, 13, 14, 15 | **€95**

BLACK 019

ELMWOOD 975



PHYSICAL TRAINING READY



We are further extending our offering of training and workout related products, and in 2023 are adding a purpose-built PT-R backpack [page 62] with a ventilated dirty/shoe compartment and removable external and internal compression straps for your accessories.

And for those small items you like to bring inside the gym, check out our PT-R DOPP Kit [page 63] with enough space for all your essentials, a hook-and-loop area for your name tag and internal pockets and elastic bands to keep everything in place.



NEW

PT-R™ GYM BACKPACK

- + Ventilated dirty/shoe compartment
- + Clamshell main compartment with internal laptop and org
- + Removable straps for external and internal compression of accessories
- + Rear lifting belt pass through
- + 600D Polyester
- + 45.7cm H x 30.5cm x 22.9cm D (18"H x 12"W x 9"D)
- + 30-liter total capacity
- + Weight 1.4 kg

56779 PT-R GYM BACKPACK | BLACK (019), KANGAROO (134), SAGE GREEN (831) | 1 SZ | **€169**

BLACK 019

KANGAROO 134

SAGE GREEN 831



NEW

PT-R™ DOPP KIT

- + Wide main compartment opening for easy access
- + Internal org of pockets and elastic bands
- + Stowable hook
- + Carry strap
- + 6x1 Loop name tape
- + 600D Polyester (body) | 600D Polyester w/ TPU (base) | 15.2cm H x 26cm W x 10.2cm D (6"H x 10.25"W x 4"D) | 3.6-liter total capacity

56825 PT-R DOPP KIT | BLACK (019) | 1 SZ | €45

BLACK 019



NEW COLOURS

TACTEC® TRAINER WEIGHT VEST

- + Low profile, lightweight and comfortable training weight vest
- + Fits Rogue® weight plates and Tactec® Weight Plate
- + Adjustable yoke shoulder straps with breathable mesh padding
- + Adjustable stretch cummerbund with pockets and MOLLE
- + ID loop and 6x1 name tape
- + Front web MOLLE platform
- + Top admin front pocket with hook/loop closure and pull tab
- + Internal plate retention straps
- + Breathable mesh body pads
- + Rear loop laser-cut and web MOLLE
- + 56665 PC Convertible Hydration Carrier compatible

56693 TACTEC TRNR WGT VEST | BLACK (019), KANGAROO (134), SAGE GREEN (831), KOMBU GREEN (1003), PACIFIC NAVY (721) | 1 SZ | €155

BLACK 019

KANGAROO 134

PACIFIC NAVY 721

SAGE GREEN 831

KOMBU GREEN 1003



WEIGHT PLATES

- + 56751: Weight 5.75lbs ea, 31.7cm H x 24.1cm W (12.5"H x 9.5"W); 6mm Thickness
- + 56752: Weight 8.75lbs ea, 31.7cm H x 24.1cm W (12.5"H x 9.5"W); 9.5mm Thickness
- + Ergonomic compound curvature with low profile
- + Multiple grab handles, 2" tie down slots
- + Durable powder coat finish
- + Steel
- + Not for use in body armor - fitness use only

56751 WEIGHT PLATE 5.75LBS SET | INCLUDES 2 PLATES | WEATHERED ORANGE (366) | 1 SZ | **€85**

56752 WEIGHT PLATE 8.75LBS SET | INCLUDES 2 PLATES | BLACK (019) | 1 SZ | **€85**

BLACK 019

WEATHERED ORANGE 366



PC CONVERTIBLE HYDRATION CARRIER

- + 500D nylon
- + 35cm H x 23cm L x 13cm D (14.0"H x 9.0"L x 5.0"D)
- + 671 cubic inch / 11-liter total capacity
- + Weight 0.475kg
- + Compatible with 5.11® Plate Carriers, All Missions Rig and MOLLE platforms
- + Convertible from pouch to backpack
- + Stowable helmet/shove-it mesh panel
- + Fits up to 3L hydration reservoir

56665 PC HYDRATION CARRIER | BLACK (019), KANGAROO (134), RANGER GREEN (186) | 1 SZ | **€69**

BLACK 019

KANGAROO 134

RANGER GREEN 186



TACTEC® WEIGHT PLATE SANDBAG

- + 600D polyester
- + 32cm H x 25cm L x 2.5cm D (12.75"H x 9.75"L x 1"D)
- + Weight 1.02 kg
- + Adjustable bag with hook/loop flap closures
- + Roll up closure system to secure in sand or weighted material
- + Internal PE board
- + Internal center baffle

56694 TACTEC WEIGHT PLATE SANDBAG | BLACK (019) | 1 SZ | **€85**

BLACK 019



WTS WIDE 3L HYDRATION SYSTEM

- + Hydrapak® | BPA/PVC Free | 0.4mm TPU thickness
- + 36cm H x 23cm W (14"H x 9"W) | 3-liter (100 fl oz) total capacity
- + Patented slide-seal closure
- + Fixed center baffle for a slim profile

56721 WTS WIDE 3L HYDRATION | BLACK (019) | 1 SZ | **€59**

BLACK 019



PT-R™ WEIGHT KIT 50

Enlist in the always training lifestyle with our PT-R™ Weight Kit 50. Two PT-R™ 25 liners capable of holding 11kg (25 pounds) of sand* are included, along with a zippered Physical Training - Ready bag to haul the challenging 22kg (50 pounds). The liners can be used separately as training weights and feature roll-top openings to minimize setup pain. The PT-R™ bag features seven reinforced non-slip handles that are ideally suited for a variety of workouts. Double-layer reinforcement on the bottom and end panels shuns abrasion that forces lesser bags to surrender. *Sand not included.

- + 1050D Nylon
- + 10cm H x 71cm L x 23cm D (4"H x 28"L x 9"D)
- + 1282 cubic in / 21-liter total capacity
- + Weight: 1.2kg (bag 2 liners)
- + Heavy duty Physical Training Ready bag with 2 PT-R™ 25 lb liners included
- + Dual PT-R™ Liners can be used separately or placed inside the weight bag
- + Roll top liners allow for easy fill
- + Reinforced non-slip grab handles
- + Single side opening with protected zipper
- + No hardware design for comfort and durability

56575 PT-R WEIGHT KIT 50 | BLACK (019), KANGAROO (134) | 1 SZ | €145

BLACK 019

KANGAROO 134



PT-R™ WEIGHT KIT 100

Enlist in the always training lifestyle with our PT-R™ Weight Kit 100. Two PT-R™ 50 liners capable of holding 22kg (50 pounds) of sand* are included, along with a zippered Physical Training - Ready bag to haul the mettlesome 44kg (100 pounds). The liners can be used separately as training weights and feature roll-top openings to minimize setup pain. The PT-R™ bag features seven reinforced non-slip handles that are ideally suited for a variety of workouts. Double-layer reinforcement on the bottom and end panels shuns abrasion that forces lesser bags to surrender. *Sand not included.

- + 1050D Nylon
- + 20cm H x 71cm L x 23cm D (7.75"H x 28"L x 9"D)
- + 2014 cubic in / 33-liter total capacity
- + Weight: 1.4kg (bag 2 liners)
- + Heavy duty Physical Training Ready bag with 2 PT-R™ 50 lb liners included
- + Dual PT-R™ Liners can be used separately or placed inside the weight bag
- + Roll top liners allow for easy fill
- + Reinforced non-slip grab handles
- + Single side opening with protected zipper
- + No hardware design for comfort and durability

56576 PT-R WEIGHT KIT 100 | BLACK (019), KANGAROO (134) | 1 SZ | €165

BLACK 019

KANGAROO 134





5.11° A/T™ TRAINER

Get your physical training off on the right foot. All the features of A.T.L.A.S. Technology are available in a shoe designed to help you undergo every kind of workout punishment you can stand. And some you can't. The 5.11° A/T™ Trainer adds comfort and substantially increased agility, flexibility, and durability to your cross training, functional fitness and heavy workouts.

- + Nylon, polyester mesh, TPU
- + High abrasion mesh with welded support for structure
- + TPU toe for durability
- + A.T.L.A.S. Technology Echo Lite high rebound EVA/outsole
- + Compatible with A/T™ Support Plate

12429 5.11 A/T TRAINER | BLACK (019), GUNSMOKE (067), DUNE (074), BROWN DUCK (080), CINDER (089), STORM (092), DARK COYOTE (106) TURBULENCE (545), CRIMSON (556), BLACK/WHITE (934) | REGULAR: 4, 5, 6-12, 13, 14 | **€119**

BLACK 019	GUNSMOKE 067	DUNE 074	BROWN DUCK 080	CINDER 089	STORM 092
DARK COYOTE 106	TURBULENCE 545	CRIMSON 556	BLACK/WHITE 934		



Men's Body Measurements

Alpha Size	XS	S	M	L	XL	XXL	3XL	4XL							
Numeric Size Bottom	-	-	28	30	32	34	36	38	40	42	44	46	48	50	52
Neck	34	36	37	38	39	41	42	43	45	46	47	48	50	51	52
Chest	81	86	91	97	102	107	112	117	122	127	132	137	142	147	153
Arm Length	83	83.5	85	85.5	87	87.5	89	89.5	91	91.5	93	93.5	95	95.5	95.5
Waist	61	66	71	76	81	86	91	96.5	102	107	112	117	122	127	133
Pant Waist	67	72	76	81	86.5	91.5	96.5	102	107	112	117	122	127	132	137
Seat/Hip (Fullest Area)	83	88	93	98	103	108	113	118	123	128	133	138	144	149	154

Height: Short = 160cm-172cm | Regular = 173cm-184cm | Long = 185cm-191cm | Short sizes have 5cm reduced from body and sleeve length. Tall sizes have 5cm added to body and sleeve length. *Arm refers to your actual arm length, not the garment's sleeve length.

WOMEN'S BODY MEASUREMENTS

Alpha Size	XS	S	M	L	XL					
US	0	2	4	6	8	10	12	14	16	18
UK	4	6	8	10	12	14	16	18	20	22
EU	30	32	34	36	38	40	42	44	46	48
Chest	83	85	88	90	93	96	99	103	108	113
Waist	63	66	67	71	74	76	80	85	90	95
Pant Waist	77	81	84	87	89	91	95	98	103	108
Seat/Hip (Fullest Area)	90	93	95	98	100	103	107	110	116	121

Height: Regular = 165cm-170cm | Tall = 171cm-180cm | Tall sizes have 5cm added to body length and 3.5cm added to sleeve length. *Arm length refers to your actual arm length, not the garment's sleeve length.

PANTS - NUMERIC SIZES

		PANT WAIST									
		Label	28"	30"	32"	34"	36"	38"	40"	42"	44"
INSEAM (LEG)	Label	cm	76	81	86.5	91.5	96.5	102	107	112	117
	30"	76									
	32"	81									
	34"	86.5									
	36"	91.5									

In the example above if your pant waist measurement is 91.5cm and your inseam measurement is 81cm then you would fit a 34/32 labelled pant.

MEN'S FOOTWEAR SIZING

US Size	4	5	6	6½	7	7½	8	8½	9	9½	10	10½	11	11½	12	13	14	15
UK Size	3	4	5	5.5	6	6.5	7	7.5	8	8.5	9	9.5	10	10.5	11	12	13	14
EU Size	37	37.5	38.5	39	40	40.5	41	42	42.5	43	44	44.5	45	45.5	46	47.5	48.5	49.5

WOMEN'S FOOTWEAR SIZING

US Size	5	6	6½	7	7½	8	8½	9	9½	10	11
UK Size	3.5	4.5	5	5.5	6	6.5	7	7.5	8	8.5	9.5
EU Size	36	37.5	38	38.5	39	40	40.5	41	42	42.5	44

HEADWEAR SIZING

Size	Measurement		
7	22" / 56 cm	One Size Fits Most	M/L
7 1/8	22 3/8" / 57 cm		
7 1/4	22 3/4" / 58 cm		
7 3/8	23 1/8" / 59 cm		
7 1/2	23 1/2" / 60 cm		L/XL
7 5/8	23 7/8" / 61 cm		
7 3/4	24 1/4" / 62 cm		

GLOVE SIZING

Unisex Size	S	M	L	XL	2XL
Hand Width (cm)	7.8	9	10.3	11.4	12.7



With a flat hand measure across your knuckles.

Conversion: To convert between metric and imperial sizes: 1 inch = 2.54cm / 1 cm = 0.39 inches.

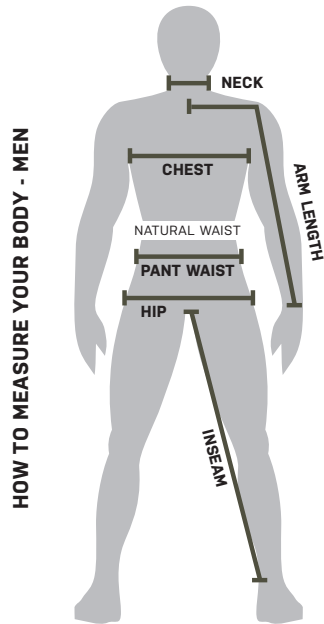
Using a measuring tape, measure your body (not over clothing). If you fall between sizes, order the smaller size for a tighter fit or the larger size for a looser fit.

MEN

Use your chest, arm length and neck measurements to determine the proper size for tops and outerwear; use your pant waist measurement (where you wear your pants) for bottoms and belts.

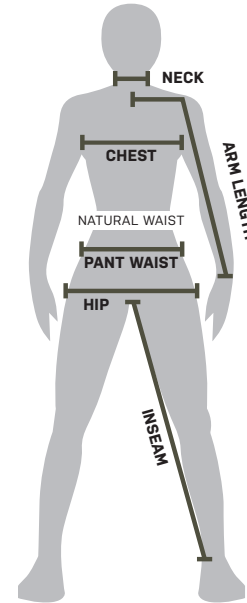
WOMEN

Use your chest measurement to determine the proper size for tops and outerwear; use your pant waist measurement (where you wear your pants) and hip measurements for bottoms and belts.



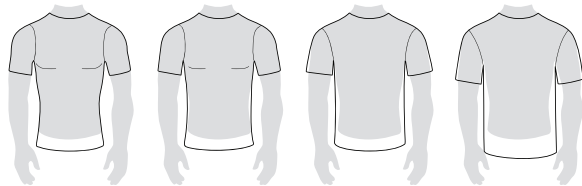
HOW TO MEASURE YOUR BODY - MEN

- NECK**
Measure around the base of your neck
- CHEST**
Measure under arms and around the fullest part of your chest with measuring tape parallel to the floor.
- ARM LENGTH**
Slightly bend elbow and measure from center back neck, over top of shoulder and down to wrist.
- PANT WAIST**
Measure around your waist where you wear your pants.
- HIP**
Stand with your feet together and measure around the fullest part of your hip with the measuring tape parallel to the floor.
- INSEAM**
Measure inside of leg from crotch to ankle or desired length.

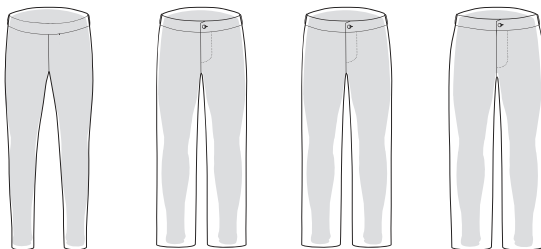


HOW TO MEASURE YOUR BODY - WOMEN

MEN'S FITS

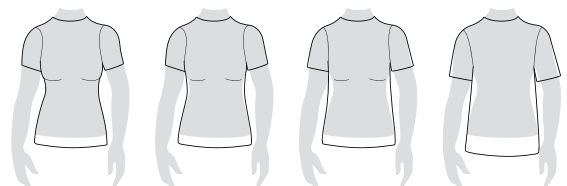


- COMPRESSION**
A tight, compressive fit.
- FITTED**
A body skimming fit. Non-compressive.
- REGULAR**
A comfortable, professional fit. Neither slim nor oversized.
- CLASSIC**
A full, generous fit allowing superior range of motion.

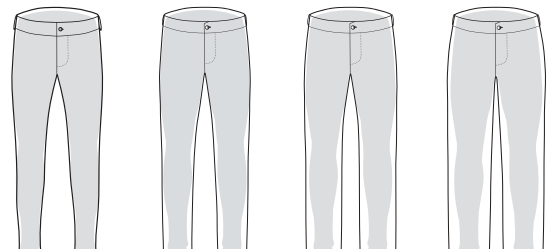


- SLIM**
Mid-rise slim fit from waist to knee. Tapered to leg opening for trimmest fit.
- STRAIGHT**
Mid-rise straight fit from waist to thigh, slight taper to leg opening.
- REGULAR**
Mid-rise with room to move without being baggy. Straight cut from knee to leg opening.
- RELAXED**
Mid-rise with our most generous fit from waist to knee. Straight from knee to leg opening.

WOMEN'S FITS



- COMPRESSION**
A tight, compressive fit.
- FITTED**
A body skimming fit. Non-compressive.
- REGULAR**
A comfortable, professional fit. Neither slim nor oversized.
- CLASSIC**
A full, generous fit allowing superior range of motion.



- SKINNY**
Mid-rise with a skinny fit from hip to leg opening.
- SLIM**
Mid-rise with a slim fit through hip and thigh. Slight taper from knee to leg opening.
- STRAIGHT**
Mid-rise with a straight fit from hip to leg opening.
- REGULAR**
Mid-rise with room to move. Straight cut from knee to leg opening.



WWW.511TACTICAL.COM

NOW SHIPPING IN THE EU

5.11® INTERNATIONAL (EUROPE)

GEIJERSGATAN 2B, SE-216 18 LIMHAMN, SWEDEN
TEL: +46 40 467 388 | EMAIL: info.emea@511tactical.com

5.11® INTERNATIONAL (MIDDLE EAST)

SIT TOWER, DUBAI SILICON OASIS, DUBAI, UAE
TEL: +971 56 446 5035

5.11® OPS Center

3201 N. AIRPORT WAY, MANTECA, CA 95336, USA
TEL: 209.527.4511 | FAX: 209.527.1511

5.11® Global Innovation Center

3150 BRISTOL, 3RD FLOOR | COSTA MESA, 92626, OFFICE 1004
TEL: 949.800.1511 | FAX: 949.777.4795

